

# User Manual



## **K1297-G20 Monitor Protocol Tester**

**C73000-B6076-C91-14**

This document supports software version 3.10 and above  
and the device types 7KK1200-B (K1297) and  
7KK1200-P (K1297 Compact)

Revised: June 2004

Copyright © Tektronix, Inc. All rights reserved.

Tektronix products are covered by U.S. and foreign patents, issued and pending. Information in this publication supercedes that in all previously published material. Specifications and price change privileges reserved.

Valid controlled documentation is only distributed electronically by Tektronix. Printed copies are considered for reference only.

Tektronix Berlin GmbH & Co. KG  
Wernerwerkdamm 5  
13629 Berlin  
GERMANY

TEKTRONIX and TEK are registered trademarks of Tektronix, Inc.

Adobe® Acrobat® Reader Version 5.0: Copyright © Adobe Systems Incorporated  
1987 - 2001

Microsoft® Windows XP® Embedded: Copyright © Microsoft Corporation  
1985 - 2001

Microsoft® Internet Explorer® Version 5.5: Copyright © Microsoft Corporation  
1995 – 2000

Berkeley Filter Software: Copyright © The Regents of the University of California  
1990 - 1997

Network Time Protocol Software: Copyright © David L. Mills 1992–2003

## WARRANTY

Tektronix warrants that this product will be free from defects in materials and workmanship for a period of one (1) year from the date of shipment. If any such product proves defective during this warranty period, Tektronix, at its option, either will repair the defective product without charge for parts and labor, or will provide a replacement in exchange for the defective product.

In order to obtain service under this warranty, Customer must notify Tektronix of the defect before the expiration of the warranty period and make suitable arrangements for the performance of service. Customer shall be responsible for packaging and shipping the defective product to the service center designated by Tektronix, with shipping charges prepaid. Tektronix shall pay for the return of the product to Customer if the shipment is to a location within the country in which the Tektronix service center is located. Customer shall be responsible for paying all shipping charges, duties, taxes, and any other charges for products returned to any other locations.

This warranty shall not apply to any defect, failure or damage caused by improper use or improper or inadequate maintenance and care. Tektronix shall not be obligated to furnish service under this warranty a) to repair damage resulting from attempts by personnel other than Tektronix representatives to install, repair or service the product; b) to repair damage resulting from improper use or connection to incompatible equipment; c) to repair any damage or malfunction caused by the use of non-Tektronix supplies; or d) to service a product that has been modified or integrated with other products when the effect of such modification or integration increases the time or difficulty of servicing the product.

**THIS WARRANTY IS GIVEN BY TEKTRONIX WITH RESPECT TO THE LISTED PRODUCTS IN LIEU OF ANY OTHER WARRANTIES, EXPRESS OR IMPLIED. TEKTRONIX AND ITS VENDORS DISCLAIM ANY IMPLIED WARRANTIES OF MERCHANTABILITY OR FITNESS FOR A PARTICULAR PURPOSE. TEKTRONIX' RESPONSIBILITY TO REPAIR OR REPLACE DEFECTIVE PRODUCTS IS THE SOLE AND EXCLUSIVE REMEDY PROVIDED TO THE CUSTOMER FOR BREACH OF THIS WARRANTY. TEKTRONIX AND ITS VENDORS WILL NOT BE LIABLE FOR ANY INDIRECT, SPECIAL, INCIDENTAL, OR CONSEQUENTIAL DAMAGES IRRESPECTIVE OF WHETHER TEKTRONIX OR THE VENDOR HAS ADVANCE NOTICE OF THE POSSIBILITY OF SUCH DAMAGES.**



# Contents

<b>General Safety Summary</b> .....	<b>iii</b>
<b>Service Safety Summary</b> .....	<b>vii</b>
<b>Preface</b> .....	<b>1</b>
Prerequisites .....	4
Assistance .....	5
Contacting Tektronix .....	8
<b>Getting Started</b> .....	<b>9</b>
Device Description .....	10
Exchanging Measuring Modules .....	26
Connecting to the Data Line .....	35
Switching on the Device .....	36
Software Installation .....	42
Security Requirements .....	57
Ethernet Connection .....	58
Remote Operation .....	60
Connecting Peripherals .....	62
<b>Examples</b> .....	<b>63</b>
Online Monitoring in a Network .....	64
Recording and Reviewing Monitoring Data .....	72
Calltrace .....	79
<b>Appendix A: Interfaces</b> .....	<b>A-1</b>
System Unit .....	A-2
AP-4 and AP-4/256 Board .....	A-21
BAI Board .....	A-27
V./X. Board .....	A-38
E1/DS1 Monitoring Board .....	A-47
Ethernet Board .....	A-51
<b>Appendix B: Keyboard</b> .....	<b>B-1</b>
<b>Appendix C: Specifications</b> .....	<b>C-1</b>

<b>Appendix D: Windows XPe Troubleshooting</b> .....	<b>E-1</b>
Preventive Measures .....	E-1
Repair Measures .....	E-7
<b>Abbreviations</b> .....	<b>F-1</b>
<b>Index</b> .....	<b>Index-1</b>

# General Safety Summary

Review the following safety precautions to avoid injury and prevent damage to this product or any products connected to it. To avoid potential hazards, use this product only as specified.

*Only qualified service personnel should perform service procedures.*

While using this product, you may need to access other parts of the system. Read the *General Safety Summary* in other system manuals for warnings and cautions related to operating the system.

## To Avoid Fire or Personal Injury

**Use Proper Power Cord.** Use only the power cord specified for this product and certified for the country of use.

**Connect and Disconnect Test Leads Properly.** Do not connect or disconnect test leads while they are connected to a voltage source.

**Ground the Product.** This product is grounded through the grounding conductor of the power cord. To avoid electric shock, the grounding conductor must be connected to earth ground. Before making connections to the input or output terminals of the product, ensure that the product is properly grounded.

**Observe All Terminal Ratings.** To avoid fire or shock hazard, observe all ratings and markings on the product. Consult the *Appendix C* of the *User Manual* for further ratings information before making connections to the product.

Do not apply a potential to any terminal, that exceeds the permitted rating of that terminal.

With some interfaces only voltages corresponding to the default of the relevant connector are applied at the measuring sockets. However, high voltages from the line may occur at some of the measuring sockets. These measuring sockets are protected against accidental contact and are specially labelled.

**Use Proper AC Adapter.** Use only the AC adapter specified for this product.

**Do Not Operate Without Covers.** Do not operate this product with covers or panels removed.

**Do Not Look into the End of a Fibreglass Cable.** Never look into the end of a fibreglass cable or a single fibre which could be connected to a laser source. Laser radiation can damage your eyes because it is invisible and your pupils do not contract instinctively as with normal bright light. If you think your eyes have been exposed to laser radiation, you should have your eyes checked immediately by an eye doctor. The optical output's radiation power in our system corresponds to the laser class 1 in accordance with EN60825-1, IEC 825-1, and U.S. CDRH regulations.

**Use Proper Fuse.** Use only the fuse type and rating specified for this product.

**Avoid Exposed Circuitry.** Do not touch exposed connections and components when power is present.

**Do Not Operate With Suspected Failures.** If you suspect there is damage to this product, have it inspected by qualified service personnel.

**Do Not Operate in Wet/Damp Conditions.**

**Do Not Operate in an Explosive Atmosphere.**

**Keep Product Surfaces Clean and Dry.**

**Provide Proper Ventilation.** Refer to the manual's installation instructions for details on installing the product so it has proper ventilation.

## **Certifications and Compliances**

Consult the product specifications in the *Appendix C* for certifications and compliances.



## Safety Terms and Symbols

**Terms in this Manual.** These terms may appear in this manual:



---

**WARNING.** *Warning statements identify conditions or practices that could result in injury or loss of life.*

---



---

**CAUTION.** *Caution statements identify conditions or practices that could result in damage to this product or other property.*

---

**Terms on the Product.** These terms may appear on the product:

**DANGER** indicates an injury hazard immediately accessible as you read the marking.

**WARNING** indicates an injury hazard not immediately accessible as you read the marking.

**CAUTION** indicates a hazard to property including the product.

**Symbols on the Product.** These symbols may appear on the product:



**WARNING**  
High Voltage



**WARNING**  
Laser Radiation  
Laser Class 1



**CAUTION**  
Refer to Manual



Protective Ground  
(Earth) Terminal



Observe precautions for handling  
electrostatic discharge sensitive  
devices



**WARNING**  
End of a Fibre-  
class Cable



# Service Safety Summary

Only qualified service personnel should perform service procedures. Read this *Service Safety Summary* and the *General Safety Summary* before performing any service procedures.

**Do Not Service Alone.** Do not perform internal service or adjustments of this product unless another person capable of rendering first aid and resuscitation is present.

**Disconnect Power.** To avoid electric shock, switch off the instrument power, then disconnect the power cord from the mains power.

**Use Care When Servicing With Power On.** Dangerous voltages or currents may exist in this product. Disconnect power, remove battery (if applicable), and disconnect test leads before removing protective panels, soldering, or replacing components.



# Preface

The Protocol Tester K1297 and K1297 Compact analyzes wide area communication networks with SS#7 (CCS#7), ISDN D channel, V5.x, GSM 900, DCS 1800, PCS 1900, CDMA, NMT 900, GPRS and internet protocols.

You can simultaneously monitor up to 16 PCM interfaces and 32 signalling links using this Protocol Tester. It can automatically capture the signalling channels and the framing when monitoring PCM routes. E1/DS1, ISDN BAI S<sub>0</sub>, and U<sub>2B1Q</sub>, as well as V./X. and Ethernet interface boards are currently available.

Using the approximately 150 implemented WAN communication protocols – including a number of national and manufacturer-specific variants – you can decode and analyze almost all signalling data online as well as offline.

The required protocols can be combined according to your needs using the graphical protocol stack editor. You can trigger and filter the data stream in order to keep data simple for analysis. A series of measuring applications is available for analyses.

The Protocol Tester is designed with the following in mind:

- **Modular form.** The modular design using the VME bus enables optimum adaption to different tasks. The modular concept of the Protocol Tester with four slots for the interface modules makes it extendable for almost any future applications.
- **Easy to operate.** The Windows XP provides a familiar and easy-to-operate interface.
- **Easy to transport.** The Protocol Tester is light weight and compact so it's easy to transport. A transport case is available to protect the instrument.

**K1297 and K1297 Compact.**

The Protocol Tester is available in two variants: The *K1297 Compact* is a fairly small, portable device. The *K1297* is a slightly bigger benchtop device.

If both variants do not differ from each other the term *Protocol Tester* is used throughout this manual. Differences between *K1297 Protocol Tester (device type 7KK1200-B)* and *K1297 Compact Protocol Tester (device type 7KK1200-P)* are marked specially.

K1297-G20 Monitor software, applications and Online Help are similar in both variants. Differentiation is not necessary.

### Fields of Application

The K1297 / K1297 Compact has been designed for various purposes:

- to detect interferences in individual network segments
- to support the integration of different network elements
- to develop integration tests and to test new software versions

The Protocol Tester is a passive monitoring device which will not interfere with the network.

Due to the **auto restart mechanism**, error-free, long-term measurements are possible after a power outage.

## Prerequisites

You should have the following qualifications to work with the Protocol Tester:

- Knowledge of PC and Windows-XPe
- Experience with communications test applications
- Familiarity with the safety requirements for electrical equipment for measurement, control and laboratory use



## Assistance

To help you use the Protocol Tester, the following documentation is provided:

- The User Manual assists you when starting the Protocol Tester. The User Manual is also available as a PDF online manual.
- The online help system is the detailed reference documentation. To open the Help window with the context-sensitive descriptions, press <F1> from within an application window.
- The Protocol Assistant is the detailed protocol reference documentation. To open it, press <F2> from within the monitor main window. The Protocol Assistant reflects the tester's software implementation of protocols.

---

**NOTE.** *The scope of the provided documentation does not necessarily mirror your order but might go beyond to give you a overview of what is available.*

---

- The release notes are delivered separately and contain the latest information on the current software version (readme.txt).
- Windows XP online help: To open the Windows XP online help, click in the taskbar on *Start: Help and Support*.

---

**NOTE.** *The Windows XP installation is an OEM version. Therefore the Microsoft Support cannot be used. The Protocol Tester is supported by Tektronix only.*

---

### About the User Manual

The User Manual gives you an overview on how to work with the Protocol Tester:

- The most important part of the introductory chapter is the safety instructions.
- *Getting Started* tells you how to make the device ready for start-up, for example how to set up the device and how to establish the measuring connection, how to exchange modules, how to configure and start applications.
- *Examples* describes some applications step by step. If you follow these steps, you will quickly reach the desired measuring result.
- In the appendices you will find an explanation of the interfaces and boards, a keyboard description and the technical data.

The following text styles and markings have specific meaning in this manual:

<b>Text style</b>	<b>Description</b>
<i>Courier</i>	The Courier font indicates menus and menu functions as well as commands, parameters and examples.
<Key>	Keys or key sequences are in angle brackets.

**Training Information**

Contact your local sales office or our service support staff for information on training for the communications test technology with the K1297 / K1297 Compact.

**Third-Party Products**

To offer you complete solutions, it is sometimes necessary to buy products - such as modems and remote operation software - from third-party suppliers, and sell them together with our products.

So, if our products are used in a standard configuration that has not been tested by Tektronix, we kindly ask you for your understanding should we need to refer you to the supplier for support.

## Contacting Tektronix

**Address**            Tektronix Berlin GmbH & Co. KG  
                          Wernerwerkdamm 5  
                          13629 Berlin  
                          GERMANY

**Web site**            [www.tektronix.com](http://www.tektronix.com)

**Technical support**    For hotline service support, call:  
  
                          +4930-386-22200  
                          (8:00 a.m. – 00:30 p.m. GMT + 01:00 and  
                          1:30 p.m. – 6:00 p.m. GMT + 01:00)  
  
                          or  
                          1-800-833-9200 (This phone number is toll free in North  
                          America. After office hours, please leave a voice mail  
                          message. Outside North America, contact a Tektronix  
                          sales office or distributor; see the Tektronix web site for a  
                          list of offices.)

Or fax:  
+4930-386-22546

Or contact us by e-mail:  
[mpt.hotline@tek.com](mailto:mpt.hotline@tek.com)



# Getting Started

This chapter tells you how to prepare the Protocol Tester for start-up, this means how to set up the device, how to exchange the measuring modules, how to connect the data line, and how to switch on the device.

Information on switching off the device and how to prepare the Protocol Tester for transport is included at the end of this chapter.

---

**NOTE.** *The device has been delivered according to your requirements.*

*Please examine the merchandise for visible transport damage and for completeness using the pick slip.*

---

## Device Description

Each K1297 and K1297 Compact Protocol Tester consists of a basic device and the individual measuring modules (interface boards) which are for fitting the basic device according to your individual application purposes.

The basic device is equipped with a powerful PC board, a hard disk of  $\geq 2$  GB and VME bus.

- With K1297 seven slots are available for the measuring modules.
- With K1297 Compact four slots are available for the measuring modules.

Each basic device also features a TFT display (XGA), two PC card slots (type II; also called PCMCIA cards), a 3.5" floppy disk drive and a removable keyboard with integrated trackball.

**External PE GND.** On the right side of the device, next to power cord connector, power switch, and fuses you will find an external PE GND screw. You can use this screw terminal to connect a separate protective earth to the K1297.

To do so, use at least an AWG18 cable. Connect the protective earth cable between the screw head and flat washer of the PE GND. Make also a good connection at the point where you connect the other end of the cable.

---

**NOTE.** *The K1297 is intended to be electrically grounded. The delivered power cord is equipped with a three-wire grounding plug that has a third grounding pin. Connect this plug to a grounded AC socket.*

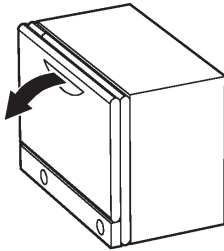
*If you are not sure that your AC socket has a protective ground, you can connect a protective earth separately to the K1297 at the rear PE GND screw terminal.*

---

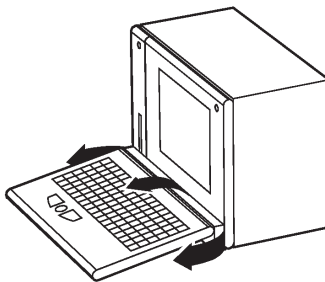
**K1297: Setting-up the Device**

Proceed as follows when setting up the device:

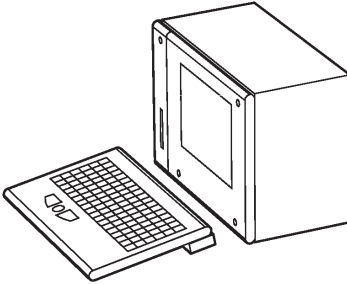
1. Pull the dark-gray release handle above the logo forward and fold the keyboard down.



2. Remove the gray cable box from the monitor frame by pulling it away from the device until you hear a loud click: Place both hands at the sides of the cable box and pull the cable box away from the monitor frame. Or place one hand between cable box and monitor frame and press the cable box away from the monitor frame.



3. Take the cable out of the cable box and fold the cable box underneath the keyboard. The keyboard is now positioned in a working angle in front of you.



4. Pull on the lower monitor frame to position the monitor in a working angle. The mains cable must be supplied to the non-heating appliance socket on the rear of the K1297. The mains plug must be plugged into a socket with protective ground.

**Changing the Fuses for K1297.** Spare fuses can you find in the delivered accessories box. If the fuses need to be changed, proceed as follows:

1. Switch off the device.
2. Disconnect the power cord.
3. The black fuse tray is placed on the right hand side of the mains switch, on the rear of the device.

Use an appropriate tool, such as a flat screw-driver, insert it into the slot above the on/off switch. Open the tray, pull the red strip and exchange the broken fuse.

Make sure to always use two fuses of the proper fuse type and rating.

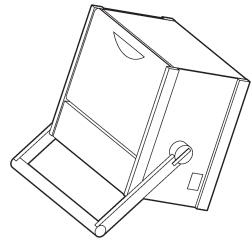
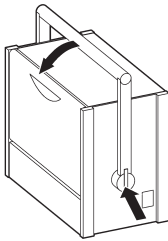
4. Close the fuse tray.



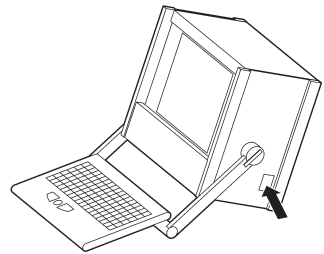
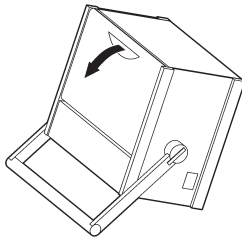
**K1297 Compact: Setting-up the Device**

Proceed as follows when setting up the device:

1. Press in both of the lateral handle hinges (handle variant: push up hinges), fold down the handle and set the device in the desired position.



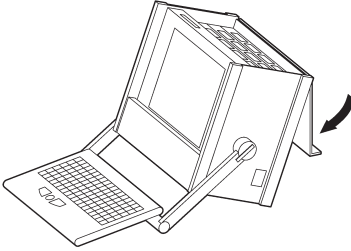
2. Pull the dark grey handle above the logo and lift the keyboard from the device.



The handle can now be used as keyboard rest.

The mains connector and the ON/OFF switch are both located on the right side of the device. The fuses are located underneath the switch cover.

3. Fold the device cover (top) towards the rear until it locks at the back.



The PC board is located in slot 1. The floppy disk drive and two PC card slots are also located underneath the device cover on the left side. You can connect modem or ISDN PC cards for remote control of the Protocol Tester or portable data carriers to the PC card slots.



---

**CAUTION.** *To avoid equipment damage, do not insert foreign objects into the disk drive or the PC card slots.*

*Insert the 3.5" diskettes into the floppy drive with the label field forward.*

---

The following interfaces are located on the cover of the **PC module** in slot 1:

- Socket for external PS/2 keyboard (KBD)
- Serial interface (COM1)
- Parallel interface (LPT1)
- 10Base-2 and 10Base-T sockets for LAN connection
- Socket for external monitor (VGA)

For further information on the individual interfaces, please refer to *Appendix A: Interfaces*.

To reset the Protocol Tester in an emergency, use a pointed tool and insert it into the RESET switch located on the cover of the PC module. There is also an LED indicating the operating state of the hard disk (HD).

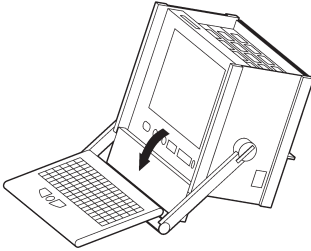
Slots 2 to 5 are available for the **measuring modules**. For further information on the individual measuring boards, please refer to *Appendix A: Interfaces*.

---

**NOTE.** *You will find information on pin assignment of the individual sockets also in Appendix A.*

---

4. Push the front cover upwards and fold the cover towards you.



The following interfaces are located behind the front cover and beneath the display:

- Keyboard connection (KEYBOARD): If the keyboard interface on the PC module's cover (KBD) is used with an external keyboard, the KEYBOARD connector must not be plugged in.
- Connections for alarm triggering and for a programmable relay. The synchronizing sockets can be used for data or timestamp synchronization of several K1297s (option).
- Serial interface (COM2)
- SCSI connection (SCSI I/O BUS), for example for an external CD-ROM or CD-RW drive

Furthermore, the LEDs for power supply ⏻ (top) and hard disk access Ⓞ are located beneath the display.

---

**NOTE.** You will find information on pin assignment of the individual sockets also in Appendix A.

---

**Changing the Fuses for K1297 Compact.** Spare fuses can you find in the delivered accessories box. If the fuses need to be changed, proceed as follows:

1. Switch off the device.
2. Disconnect the power cord.
3. The black fuse tray is placed on the right hand side of the mains switch on the right sight of the device.

Use an appropriate tool, such as a flat screw-driver, insert it into the slot above the on/off switch. Open the tray, pull the red strip and exchange the broken fuse.

Make sure to always use two fuses of the proper fuse type and rating.

4. Close the fuse tray.

### Connecting an External Monitor

The PC card of the K1297 provides a Video Graphics Array (VGA) port for connecting an external monitor. Using a PC-4 or PC-5 board, you can operate an external monitor in the following use cases:

- Displaying the same information on both monitors
- Expanding the display across both monitors
- Operating only the external monitor

**Displaying the Same Information on Both Monitors.** To display the same information on both monitors, proceed as follows:

1. Connect the external monitor to the VGA port of the PC card.
2. Switch on both devices: the K1297 and the external monitor.
3. On the K1297 *Desktop*, open the context menu by clicking the right mouse button and click *Properties*. The *Display Properties* dialog box opens.
4. Open the *CHIPS* tab in the *Display Properties* dialog box.
5. Select *Single Display Mode* from the list in the upper part of this dialog box and *BOTH* in the *Display Device* check box.
6. Confirm your settings with *OK*.
7. To exit this operating mode, open the *Display Properties* dialog box / *CHIPS* tab as described in step 3 and 4.

Select *Single Display Mode* from the list in the upper part of this dialog box and *LCD* in *Display Device* check box.

Confirm your selection by *OK*.

**Expanding the Display Across Both Monitors – Dual Display Mode.** In this mode, the display is divided horizontally or vertically into two parts. One part is displayed on the built-in display, the other one on the external monitor. To set up your computer for dual–display mode, perform the following steps:

1. Connect the external monitor to the VGA port of the PC card.
2. Switch on both devices: the K1297 and the external monitor.
3. On the K1297 *Desktop*, open the context menu by clicking the right mouse button and click *Properties*. The *Display Properties* dialog box opens.
4. Open the *CHIPS* tab in the *Display Properties* dialog box.
5. Select *Dual Display Mode* from the list in the upper part of this dialog box.
6. In the lower part of the dialog box you can now configure further settings such as vertical or horizontal monitor position.

Here, you can also select whether the external monitor (CRT) or the K1297 (LCD) should be in left / top or right / bottom position.

7. Start the dual display mode by pressing the *Apply* button.  
Both monitors show full-sized images only when the display resolution is set correctly.
8. To set the display resolution, open the *Display Properties* dialog once again (see step 3) and open the *Settings* tab.
9. Change the resolution according to the monitor position: set the *Desktop area* to 1024x1536 pixels for vertical aligned monitors and 2048x768 pixels for horizontal aligned monitors.
10. To exit the dual display mode, open the *Display Properties* dialog box as described in step 3, open the *CHIPS* tab, and select *Single Display Mode* from the list in the upper part of this dialog box. Confirm your selection by *OK*.

**Operating only the External Monitor.** Use this mode, if you want to work with more screen area. Connect a larger monitor and increase the display resolution. To operate only the external monitor, proceed as follows:

1. Connect the external monitor to the VGA port of the PC card.
2. Switch on both devices: the K1297 and the external monitor.
3. On the K1297 *Desktop*, open the context menu by clicking the right mouse button and click *Properties*. The *Display Properties* dialog box opens.
4. Open the *CHIPS* tab in the *Display Properties* dialog box.
5. Select *Single Display Mode* from the list in the upper part of this dialog box and *CRT* in the *Display Device* check box.
6. Confirm your settings with *OK*.

The external monitor operates and the built-in LCD display turns gray.

7. To enlarge the screen area, increase the display resolution. Therefore, open the *Display Properties* dialog once again (see step 3) and open the *Settings* tab. Change the *Desktop Area* to 1600x1200 maximum.
8. To exit this operating mode, open the *Display Properties* dialog box / *CHIPS* tab as described in step 3 and 4.

Select *Single Display Mode* from the list in the upper part of this dialog box and *LCD* in *Display Device* check box.

Confirm your selection by *OK*.

---

**NOTE.** *Before disconnecting the external monitor, always remember to switch back to the LCD mode. Otherwise the K1297 display remains gray.*

---



### CD-RW Drive (Option)

The external CD-RW drive (Plexwriter) from Plextor can be used to write CDs and as a CD-ROM drive. The CD-RW drive is delivered with the original Plextor manual. Read this manual carefully. Pay particular attention to the safety instructions.

For using the CD-RW drive with K1297 Protocol Testers, you should adhere to the following instructions as well:

- The SCSI-Bus-ID of the CD-RW drive should be set to a value between 2 and 6. We recommend to set the SCSI-Bus-ID to 3 before connecting the device. Then, connect one of the two SCSI interfaces of the CD-RW drive to the SCSI interface of your Protocol Tester using the supplied cable.
- Do not install the software of the Plextor Software Utilities (Plex Tools) CD on your Protocol Tester.
- If you like to write CDs with the CD-RW drive you need to install the delivered Nero burning software. To install this software insert the NERO Burning ROM (Plextor Version) from AHEAD. The CD starts automatically and opens the *Ahead Installer* dialog box. Start the installation process by clicking the *Nero* button. We recommend not to install the following Nero components:
  - NeroMediaPlayer
  - InCD Packet-Writing
  - UDF reader

---

**NOTE.** *The delivered Nero software is not usable for Windows 3.11 operating systems. Users of Protocol Testers with Windows 3.11 who like to write CDs are asked to upgrade their devices. Please contact the Tektronix hotline.*

---

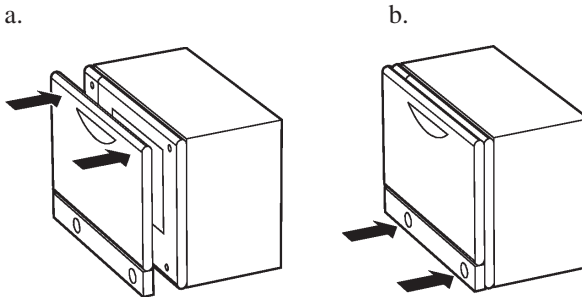
- Before writing a CD, carefully study the Nero online manual. We recommend to close all K1297-G20 Monitor applications before writing. The running applications or the writing process might be disturbed or interrupted when running simultaneously. Use only high-quality CDs.
- Do not insert CDs with Autostart mechanism into the CD-RW drive during the operation of K1297-G20 Monitor applications. Automatically started software may disturb or interrupt your running applications.

### Switching Off and Transporting the Device

Before you switch off the Protocol Tester, shut down the operating system, and then switch off the Protocol Tester using the I/O switch.

**K1297.** When folding the keyboard up, keyboard and cable box must be connected and the cable must be completely inside the cable box.

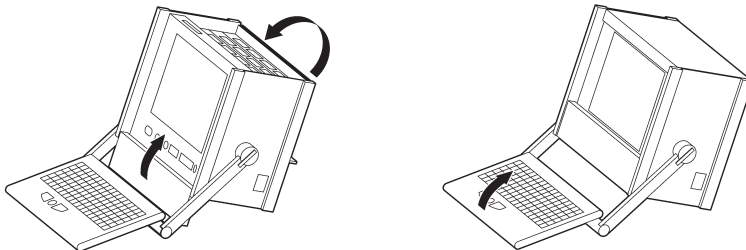
1. First put the keyboard into the holding pins which are located at the top of the monitor frame (a); then press the two locking buttons on the cable box until you hear them click (b).



Use the optional transport case to transport the device over longer distances.

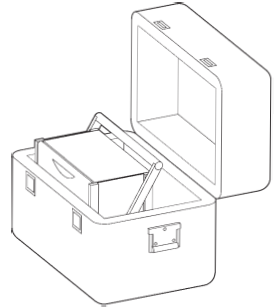
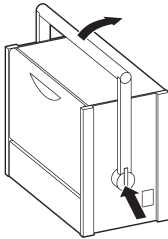
**K1297 Compact.** For transport purposes fold the cover over the slots.

1. The cover beneath the display is folded upwards and the keyboard is folded back in front of the display to protect it against damage.



2. Press the lateral handle hinges (variant handle: push up hinges) and put the handle into a vertical position.

3. Use the transport case in which the device has been delivered to transport the Protocol Tester over longer distances. Put the device into the transport case as shown below:



Before closing the transport case make sure that the handle is pointed toward the rear edge of the device.

## Exchanging Measuring Modules

E1/DS1, ISDN BAI S<sub>0</sub>, and U<sub>2B1Q</sub>, as well as V./X. and Ethernet interface boards are available as measuring modules. ATM modules will be available in the future.

You can easily install and remove the measuring modules from slots 2 to 5 (behind the PC board). You can control the individual measuring modules and the interface sockets via applications.



**CAUTION.** *The device must be switched off completely. All modules contain electrostatically sensitive components. Observe the necessary precautions and ESD safety instructions.*

*Make sure the VME bus address on the new module is set correctly (see page 30).*

---

### Which Board into which Slot?

The measuring boards and the slots are marked with different colors. So exchanging the measuring modules is made easy for you. The colors of the boards have the following meaning:

- GREEN stands for all measuring boards for WAN interfaces such as E1/DS1, S0, U2B1Q, V.X, Ethernet. Put green boards into green slots.
- YELLOW stands for the AP-4 Board. You can put yellow boards in either green or transparent slots.
- TRANSPARENT stands for the PC board. Put transparent boards into transparent slots.



**CAUTION.** *If you put a “wrong” board into a slot, you could damage the board and the instrument.*

*Slot 0 and 1 are reserved for the PC boards only. Do not put the PC board into other slots and do not put other boards into slots 0 and 1.*

---

The following color assignment matrix gives you an overview of which measuring board you can put into which slot:

**Table 1: Which board into which slot?**

<b>Board</b>	<b>Slot</b>	<b>GREEN</b>	<b>TRANSPARENT</b>
<b>GREEN</b>		yes	no*
<b>YELLOW</b>		yes	yes
<b>TRANSPARENT</b>		no**	yes

\* Restrictions could occur with some applications due to the P2 backplane adapter.

\*\* The “transparent” Ethernet board can be installed in a “green” slot.



The following figures give you an example which measuring board you can put into which slot:

#### K1297. Possible Board Combination

8	7	6	5	4	3	2	1	0
E1/DS1 Board	E1/DS1 Board	E1/DS1 Board	E1/DS1 Board	AP-4 Board	BAI S <sub>0</sub> Board	BAI S <sub>0</sub> Board (Power Feeding)	PC Board	PC Board

#### K1297 Compact. Possible Board Combination

5	4	3	2	1	0
E1/DS1 Board	Ethernet Board	BAI Board	AP-4 Board	PC Board	PC Board

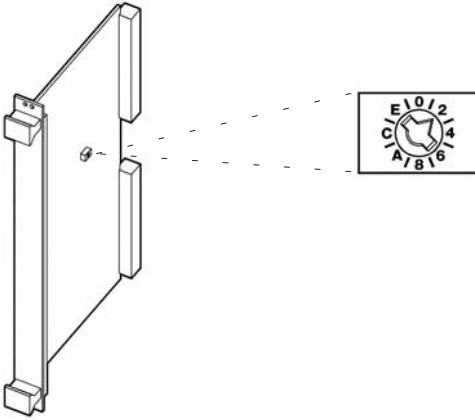
---

**NOTE.** K1297 and K1297 Compact. For each interface board a cable is delivered free of charge. Thus you are able to work right away with your Protocol Tester. Furthermore, we offer a wide range of cables and adapters, which you can order. For further information please take a look at our data sheet or contact your local sales partner.

---

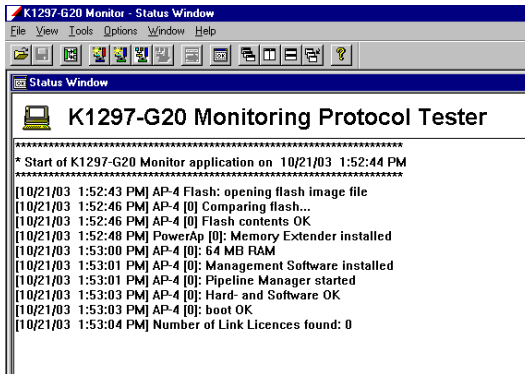
### Setting the VME Bus Address

You must adhere to the correct setting of the VME bus address using the hex switch when installing measuring modules. To avoid conflicts during initialization, the addresses must be clear. The same hex switch scale number must not appear more than once.



The hex switch is yellow with the scale from 0 to F around it and it is located in the center of the upper third of the modules. The display can be set to the desired value using an appropriate tool.

Before setting the hex switch, check which settings are already used for other boards. Therefore, open the K1297-G20 Monitor Status Window via the appropriate button in the tool bar.



The hex switch of one board must be set on value 1. The values 0 and F are reserved for the AP-4 board. Do not use the values 0 and F for other boards and do not change the AP-4 settings.

**K1297.** Make sure that the hex switches are set as follows:

**Table 2: Setting the VME bus address**

<b>Board</b>	<b>Slot</b>	<b>Hex switch number</b>
PC board	1	9
AP-4 board	2	0
Interface board 1	8	1
Interface board 2	7	2
Interface board 3	6	3
Interface board 4	5	4
Interface board 5	4	5
Interface board 6	3	6

**K1297 Compact.** Make sure that the hex switches are set as follows:

**Table 3: Setting the VME bus address**

<b>Board</b>	<b>Slot</b>	<b>Hex switch number</b>
PC board	1	9
AP-4 board	2	–
Interface board 1	5	1
Interface board 2	4	2
Interface board 3	3	3

## Installing Modules



---

**CAUTION.** *Make sure the VME bus address on the new module is set correctly (see page 30).*

---

If you install modules, proceed as follows:

1. Switch the device off and unplug the mains plug.
2. Remove the cover if necessary and put the module on the guide rails of the relevant slot.
3. Push the module completely into the slot.
4. Tighten the module with the two cross-head screws.

---

**NOTE.** *If you have to install a new E1/DS1 board and/or an AP-4 board, the Protocol Tester reprograms the boot Flash-PROM of this new board.*

*Reprogramming is done automatically during the start-up sequence of the application and takes much more time than the normal start-up sequence. Therefore just be patient. You must not switch off or shut down the Protocol Tester during this time.*

*The reprogramming is finished as soon as the LEDs of the new boards are off and the Protocol Tester shows the Data Flow Window. Although the tester is then ready to work, you have to close all K1297-G20 Monitor applications and start them (only the applications, not Windows XPe) again.*

---

### **Removing Modules**

If you remove modules, proceed as follows:

1. Switch the device off and unplug the mains plug.
2. Unscrew the two cross-head screws of the module's front cover. The screws must be completely loosened.
3. Use your thumbs to simultaneously press outwards the levers located beneath the screws.
4. Then pull the module carefully out of the device. Make sure that the spring strip on the long side of the module cover is not being damaged.
5. If the two springs located behind the screws on the internal side of the module's front cover catch when removing the module, press the springs carefully back using an appropriate tool. Then pull the module completely out of the device.

## Connecting to the Data Line

The Protocol Tester can be connected to the data line in the on or off state using the cables available as accessories.

1. Plug the right plug on the one end of the cable into a socket of the measuring module. In the K1297 they are located on the rear of the device. In the K1297 Compact the sockets of the measuring modules are located underneath the cover of the Protocol Tester.

The individual cables available as accessories are listed in the data sheet. Or ask your local sales partner about them.

We recommend that the cable length be less than 3 m.

You can control the individual measuring modules and the interfaces (sockets) via the K1297-G20 Monitor application.



**CAUTION.** *Please pay attention to possible impedance differences. The Protocol Tester is set to high impedance as default. For low input impedance you must set the tester accordingly. This is done via the K1297-G20 Monitor application.*

---

## Switching on the Device

Make sure that the keyboard cable is connected to the keyboard interface, the mains cable is supplied to the non-heating appliance socket and the mains plug is plugged into a socket with protective ground.

1. Switch the device on using the ON/OFF switch (see page 13).
2. The Protocol Tester is set ready-to-run upon delivery. The device automatically boots after switching on. The operating system is loaded and the application is then started automatically.

If you start Windows XPe for the first time, you are automatically logged on as administrator with the following information:

```
User name: Administrator-K12  
Password: xinortket12k
```



**CAUTION.** *Do not change the pre-configured Administrator-K12 account, since password changes also require modifications of the automatic logon.*

*For those changes, precise knowledge about the concept of user accounts and user groups in Windows XP is required. The risk of changes which the customer undertakes is carried by the customer.*

---

**Reprogramming of Flash-PROMs.** During the first start after installation the Flash-PROM of your interface boards may be reprogrammed. This may take some time. Do not switch off the Protocol Tester during the reprogramming process.

After reprogramming is completed you may have to close and restart the K1297-G20 Monitor application. Depending on the type and number of interface cards this procedure might have to be repeated once for each interface card.



**Updating Expired Licenses.** The K1297-G20 Monitor software will not start if a product license has expired. To help you avoid this situation, product license information is available from the Licenses option in the Help Menu in the Data Flow window. Product expiration warnings will also be displayed after the system start for products that have licenses, which will expire in 21 days or less.

If a license does expire however, you can use the normal K1297-G20 Monitor setup program to either uninstall the expired product or update the license key file.

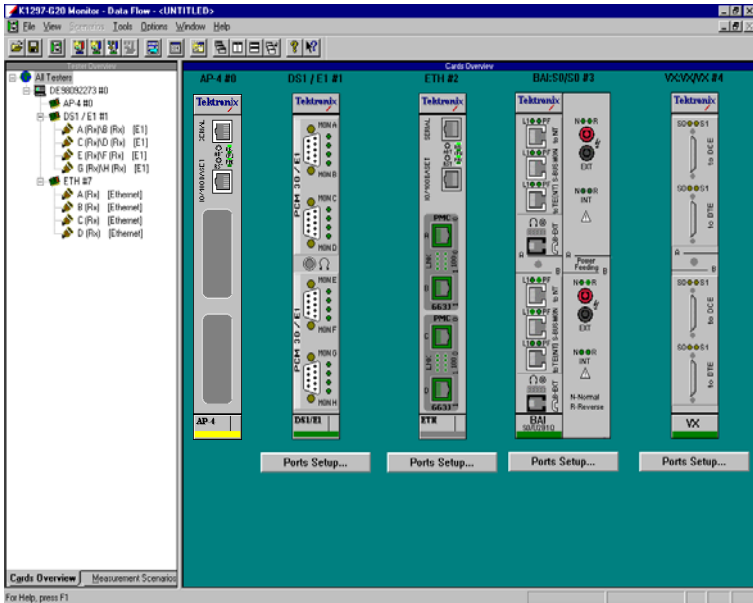
### **K1297-G20 Monitor Application**

The K1297-G20 Monitor application is started with an initial screen which shows the version number of your application on top of the screen and information on the load state of the software at the bottom.

**Data Flow Window.** If you start the autoconfiguration, the autoconfiguration feature automatically detects the signalling channels and the framing of the connected data lines. After the autoconfiguration has been carried out, the active signalling channels are available and you can start the measurement: the *Data Flow Window* appears.

There are two different tabs for setting parameters of interface modules, links and measurement scenarios: *Cards Overview* and *Measurement Scenarios*.

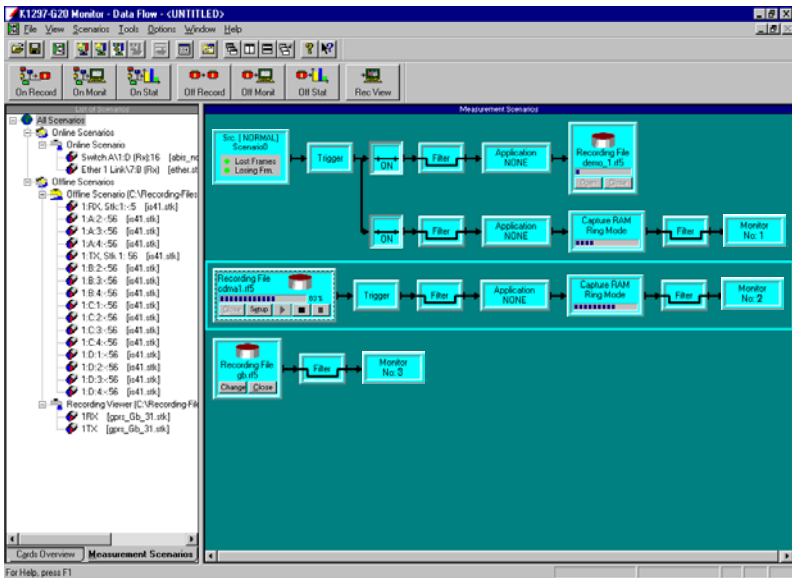
**Cards Overview.** The *Cards Overview* tab provides an overview of the connected interface modules. Here you can define the setup settings of modules and ports or change existing configuration settings. These are assigning symbolic names to the ports and defining frame types and line codes.



The left pane, *Tester Overview*, displays the interface modules, ports and the line configurations currently set. The right pane, *Cards Overview*, shows the individual sockets on the cards including module designation.

**Measurement Scenarios.** In the *Measurement Scenarios* tab of the *Data Flow Window*, configure your measurement task by defining data sources and parameters for the measurement. The *Measurement Scenarios* tab keeps you informed about the currently active parameter settings and system status at all times.

The grey boxes in the pipelines represent measurement modules (processing elements) with the connecting lines indicating the data flow between the modules.



The left pane, *List of Scenarios*, displays the available measurement tasks (scenarios) as well as the measurement tasks currently configured and the outline sources. On the right, the *Measurement Scenarios* pane displays the pipelines assigned to the measurement tasks.

---

**NOTE.** *As soon as you are in the K1297-G20 Monitor application, the K1297-G20 Monitor online help is available: simply click Help in an application window using the trackball or mouse or press <F1>.*

*The online help gives you context-sensitive assistance.*

---

## Software Installation

### Important Hints

The Protocol Tester is ready for use upon delivery. Windows XPe and the K1297-G20 Monitor application have already been installed.

Base software, application programs, updates, and upgrades are supplied on CD-ROM, with a setup program and a readme.txt file located directly under the root directory of the CD-ROM. You should read the readme file before installing the software.

Device-specific software keys protect the CD-ROM software against unauthorized access. To enable the software on your Protocol Tester, you also receive an additional *Software Keyfile / License Information Disk* (key disk).

**Mixing Different Software Versions.** Software products from different CD versions are NOT designed to be mixed. The Setup program has a security mechanism that will ensure that such version mixes cannot be installed:

After having selected your software products from this CD, you will be warned about older software products in your existing configuration that will be removed.

- If you confirm with *Yes*, the Setup program removes the old products automatically and proceeds with the installation of the new products.
- If you want to keep an old product, cancel the Setup program, backup the software as described below, and then restart the Setup program again.

If you want to install software products from different CD versions, first perform a complete backup of the existing software. This will ensure you the best control about the software configuration on your system and possible dependencies with other software packages you might have installed.

**Types of Installation.** You have two options to install Protocol Tester software:

- Installation of additional software packages: Install further software packages in addition to the already installed software version such as protocols, emulations, application programs.
- Installation of a new software version: Install a complete new version of the base software and additional software packages.

---

**NOTE.** *The K1297 Protocol Tester has been pre-configured with Microsoft Windows XPe and therefore provides you with all possibilities offered by this industry standard. This enables you to choose from a variety of available software products for the analysis and evaluation of your measurement results. Such programs can be installed and used directly on your Protocol Tester.*

*Within this context, please observe the following: The installation of additional software reduces the disk space required for saving measurement results. During the course of a measurement, only Protocol Tester applications should be run in order to ensure the exclusive availability of the disposable CPU performance for the measurement task.*

---

**User Data.** It is important to always save user data to an appropriate back up system before performing any installation. Detailed instructions for the back up are given in the appropriate section.

User data are files and directories:

- not provided by Tektronix
- stored under the installation path of the Protocol Tester

---

**NOTE.** *If you modify files and directories provided by Tektronix, it is necessary to save them under a different name. Otherwise a subsequent installation might fail or become incomplete, or your data might be overwritten.*

---

### Pre-Installation Checks

1. Ensure that the system date and time have been set to the actual date and time. Failure to do so may result in a situation where the software cannot be started.
2. Ensure that your boards meet the following memory requirements:
  - E1/DS1 Monitoring boards: 16 MB RAM minimum
  - BAI boards: 8 MB RAM minimum

At least 16 MB (recommended 32 MB) of memory are required for interface boards that are installed with VME bus address 1. (See chapter "Setting the VME Bus Address").

---

**NOTE.** *Cards that do not meet these requirements are NOT booted and CANNOT be operated. A message will appear in the K1297-G20 Monitor Status Window if memory is not sufficient. If a RAM upgrade is required, please contact your technical support representative.*

---

3. Remove the content of the directory `C:\K1297\bin`

The installation of a new K1297-G20 Monitor software over an existing K1297-G20 Monitor software can cause problems with non-existing licenses. To avoid this problem remove the content of the directory `C:\K1297\bin` of the exiting software version before you install the new version. This can be done with the Windows Explorer or on the command line with

```
del c:\K1297\bin\*.*
```



**Pre-Installation Checks for K1297-G20 Monitor PC Software.** The K1297-G20 Monitor PC Monitoring Software is supported for Windows XP Professional. It requires a dongle (aka. Aladdin Software Hardlock). For information on obtaining and configuring this special version contact your Tektronix representative. When using this version with the dongle please observe the following guidelines:

- Never attempt to attach the dongle to the appropriate port (LPT1 or USB) without first shutting the PC or Laptop down. This may damage the dongle or the hardware to which it was attached.
- Never attempt to detach the dongle from the appropriate port (LPT1 or USB) without first shutting the PC or Laptop down. This may damage the dongle or the hardware to which it was attached. If the dongle is removed while the K1297-G20 Monitor software is running, the software will terminate.

### Installation of Additional Software Packages

If you have purchased additional software packages you need to install them on top of your existing software installation. Therefore, do not remove the existing software or change its installation path (by default `C: \K1297`).

---

**NOTE.** *There are logical dependencies between single software packages and the base software package. Such information are provided in the order information and will be checked during the setup process. Only matching combinations can be installed.*

---

**Missing Destination Drives.** The Setup program warns you, if products cannot be installed on your system because of missing destination drives. The affected products are reported in a warning dialog box; they will NOT be listed in the "List of Available Products" of the Setup program.

1. If such a warning appears, create the necessary destinations drive outside of the Setup program. Refer to the Microsoft Windows Online Help on how to do this.
2. Restart the Setup program. The affected products will now become accessible in the "List of Available Products".

To install additional software packages, proceed as follows:

1. Close all applications.
2. Connect the optional external CD drive directly to your Protocol Tester or create an access to a network CD drive.

If you install the software from a CD network drive, do not browse the network neighborhood to access this location. Map the share containing the CD to an unused drive letter instead, such as "E:" or "F:"

3. Insert the key disk into the floppy disk drive of the Protocol Tester. The key disk contains a serial number, which must be the same as the nameplate fabrication code (*Ser.-No.*) on the back of the device.
4. Insert the installation CD into the CD drive. The *Setup Guide* starts automatically. *The Setup Guide* helps you to successfully install your Protocol Tester software. Follow the *Setup Guide* instructions.

If the installation does not start automatically, double-click *RunIntro.bat* from the CD root directory.

Follow the setup program instructions. Read the enclosed license agreement carefully and respond to the prompts.

Specify a valid keyfile within the keyfile selection dialog box, if you do not want to use the *keyfile.txt* on the key disk in the floppy disk drive.

In the subsequent dialog boxes, click *Next*.

5. In the product selection dialog box, installed software packages are indicated by their version numbers in the column *State*.

DO NOT deselect any installed products.

Check that all additional software packages that shall be installed are selected. Their selection might fail if:

- a. an incorrect or incomplete keyfile was selected before or
- b. not all necessary software packages were purchased or installed.

In case **a.** choose the correct keyfile using the button that indicates the currently used keyfile.

In case **b.** install all software packages that you have purchased for this system. Therefore, you might need to access all keyfiles you have received in all deliveries for this software version for this system. If you cannot proceed, contact the technical support.

6. Press *Next* to test your selection against the provided keys.

---

**NOTE.** *The `Next` button may be disabled. One possible reason is that not enough space is available on the hard disk. In that case, try to save space until the setup program displays at least 20 % free disk space.*

---

7. Press *Start* when the key check finished successfully.



---

**CAUTION.** *Do not interrupt the installation program once you have clicked `Start`. If the program is inadvertently interrupted, rename the file `C:\WINDOWS\UNINSTALL.K12XX.INI.0x` with the highest number for *x* to `C:\WINDOWS\UNINSTALL.K12XX.INI`. Start the installation program again.*

---

8. After the installation is complete, remove the key disk from the floppy disk drive and reboot your Protocol Tester.

### **Installation of a New Software Version**

Software products from different product CDs are NOT designed to be mixed. The Setup program has a security mechanism that will ensure that such version mixes cannot be installed.

If you install a new software version on top of an existing software version, the existing version will be automatically removed.

If you want to install software products from different CD versions in parallel on one Protocol Tester, first perform a complete backup of the existing software.

**Back Up the Software.** If you want to back up your existing K1297-G20 Monitor installation, proceed as follows:

1. Close all applications.
2. Use the Windows Task Manager to end the process *dio.exe*.
3. Rename the original K1297 directory *C:\K1297* (for example, *C:\K1297.vxxx*), or move the directory to a different partition.
4. Rename the file *C:\WINDOWS\UNINSTALL.K12xx.INI* (for example, *C:\WINDOWS\UNINSTALL.K12xx.INI.vxx*) before you install the new K1297-G20 Monitor software.



**CAUTION.** *If you do not rename this file before installing the new software, the software will not start.*

---



**CAUTION.** *If you create multiple installation sets on your hard disk by such back up operations, keys for different software versions will remain in your keyfile *C:\WINDOWS\keyfile.txt*. The KeyManager program will not be able to identify each back up. A subsequent call of this tool might announce keys of back up installations erroneously as "obsolete". Do not delete "obsolete" keys, as a restored installation will not run without its keys. To overcome such possible problems rename the keyfile accordingly (for example *C:\WINDOWS\keyfile.txt.vxxx*).*

---

**Installing the Software.** To install a new software version, proceed as follows:

1. Close all applications.
2. Connect the optional external CD drive directly to your Protocol Tester or create an access to a network CD drive.

If you install the software from a CD network drive, do not browse the network neighborhood to access this location. Map the share containing the CD to an unused drive letter instead, such as "E:" or "F:"

3. Insert the key disk into the floppy disk drive of the Protocol Tester. The key disk contains a serial number, which must be the same as the nameplate fabrication code (*Ser.-No.*) on the back of the device.
4. Insert the installation CD into the CD drive. The *Setup Guide* starts automatically. *The Setup Guide* helps you to successfully install your Protocol Tester software. Follow the *Setup Guide* instructions.

If the installation does not start automatically, double-click *RunIntro.bat* from the root directory of the CD.

Follow the setup program instructions. Read carefully the enclosed license agreement and respond to the prompts.

Specify a valid keyfile within the keyfile selection dialog box, if you do not want to use the *keyfile.txt* of the key disk in the floppy disk drive.

In the subsequent dialog boxes, click *Next*.

---

**NOTE.** *The Setup program warns you, if products cannot be installed on your system because of missing destination drives. The affected products (such as Conformance Tests which require a D: disk drive) are reported in a warning dialog box; they will NOT be listed in the "List of Available Products" of the Setup program.*

*If such a warning appears, proceed as described on page 46.*

---

5. In the product selection dialog, check that all software packages that shall be installed are selected. Their selection might fail if:
  - a. an incorrect or incomplete keyfile was selected before or
  - b. not all necessary software packages were purchased or installed.

In case **a.** choose the correct keyfile using the button that indicates the currently used keyfile.

In case **b.** install all software packages that you have purchased for this system. Therefore, you might need to access all keyfiles you have received in all deliveries for this software version for this system. If you cannot proceed contact the technical support.

6. Press *Next* to test your selection against the provided keys.

---

**NOTE.** *The `Next` button may be disabled. One possible reason is that not enough space is available on the hard disk. In that case, try to save space until the setup program displays at least 20 % free disk space).*

---

7. Press *Start* when the key check finished successfully.



---

**CAUTION.** *Do not interrupt the installation program once you have clicked `Start`. If the program is inadvertently interrupted, rename the file `C:\WINDOWS\UNINSTALL.K12XX.INI.0x` with the highest number for `x` to `C:\WINDOWS\UNINSTALL.K12XX.INI`. Start the installation program again.*

---

8. After the installation is complete, remove the key disk from the floppy disk drive and reboot your Protocol Tester.



## Removing the Software

To remove K1297-G20 Monitor software, proceed as follows:

1. Close all applications.
2. Start the Tektronix K1297 remove program by selecting:  
*Start / Settings / Control Panel / Add or Remove Programs: Tektronix K1297-Mon Protocol Tester*  
and press *Add/Remove*.

Remove the K1297-G20 Monitor software by selecting dedicated or all entries in the list of installed components.

User Data will be preserved.

3. Reboot the system after removing has been completed successfully.

## Operating System

The user interface application of the K1297-G20 Monitor runs under Microsoft Windows XPe.



---

**CAUTION.** *The K1297 Protocol Tester is delivered with a specially configured version of Windows XP Embedded (XPe).*

*The Windows XPe installation is supported by Tektronix only. Microsoft Support Services do not support this installation.*

*The risk of changes (software developments or expansions) which the customer undertakes is carried by the customer. Regarding this Tektronix assumes no responsibility.*

---

Windows XPe is delivered in the English version. It starts immediately after you set up and switch on your K1297. Activation is not necessary.

Windows XPe is described in detail in the Windows XP online help. To open the online help, click *Start: Help and Support* on the taskbar. *Help and Support* is your comprehensive resource for Windows XPe information and tools.

### Preconfigured Accounts, Automatic Logon

Upon delivery, the device is configured with the following user accounts:

**Table 4: Account Data**

User name	Password	State
Administrator-K12	xinortket12k	on (default)
Administrator	xinortkeT21K	on (built-in)
Guest	(none, left blank)	off



**CAUTION.** Do not rename the accounts and do not change the Group Memberships of the accounts, because this might make the device unusable.

**Autologon Account.** *Administrator-K1297* is pre-configured as autologon account. Use always this account when:

- Operating the K1297
- Operating the Remote Desktop Client



**CAUTION.** *Do not change the pre-configured Administrator-K12 account, since password changes also require modifications of the automatic logon.*

*For those changes, precise knowledge about the concept of user accounts and user groups in Windows XPe is required. The risk of changes which the customer undertakes is carried by the customer.*

---

The password for the autologon account is visible in the registry for everyone who has physical access to the device.



**CAUTION.** *For safety reasons, do not use the password of the autologon account for other accounts and on other system units (PCs, Unix networks, etc.)*

---

If you change the autologon account you must adapt the automatic logon as well. To change the automatic logon, proceed as follows:

1. Select *Start / All Programs / Powertoy for Windows XP / TweakUI for Windows XP*. The Tweak UI dialog box opens.
2. Select *Logon / Autologon* from the tree view and change the automatic logon.

Do not forget the changed passwords, as you might be locked out from using the device. For further hints on how to select good passwords, see for example

<http://archive.ncsa.uiuc.edu/SCD/Consulting/Security/passwords.html>

---

## Security Requirements

**Security Requirements for Stand Alone Systems.** The pre-configuration of the device has been chosen for a stand-alone system without enhanced security requirements for ease of operation. Particular security measures are not necessary.

**Security Requirements for Network Operation.** If you apply the Protocol Tester within a network or by way of a modem, then implement further and enhanced security measures.

We strongly recommend to observe for instance the following general statements:

- Access via an individual LAN

If you operate your Protocol Testers within an individual LAN network, then protect this network against access from other PCs.

- Access via a company-wide Intranet

If you operate your Protocol Testers within an Intranet, then implement an extended user administration and employ up-to-date virus scanners and firewalls.

- Access via Internet or modem

If you want to access your Protocol Tester via the Internet, implement the same security measures as in Intranets (see above). You can also implement additional security measures with the help of virtual private networks (VPNs).

To implement additional security measures, contact your local system administrator or the Tektronix service center.



**CAUTION.** *The implementation of extended security measures is your sole responsibility. It is realized at customer's own risk and without liability to Tektronix.*

*You should implement these measures especially while applying the Remote Desktop software or when transferring files via a network.*

---

## Ethernet Connection

If you want to operate the protocol tester in a local Ethernet network, you can use the built-in network adapter of the protocol tester. To establish an Ethernet connection, connect your Ethernet cable to the 10BaseT / 100BaseTX connector of the K1297 PC board.

The properties for the default connection can you see in the *Local Area Connection Properties* dialog box. To open this dialog box, proceed as follows:

1. Select *Start / Control Panel / Network Connections*. The *Network Connections* dialog box opens.
2. Double-click an active *Local Area Connection*. A *Status* dialog box for this connection opens. By pressing the *Properties* button you open the *Local Area Connection Properties* dialog box.

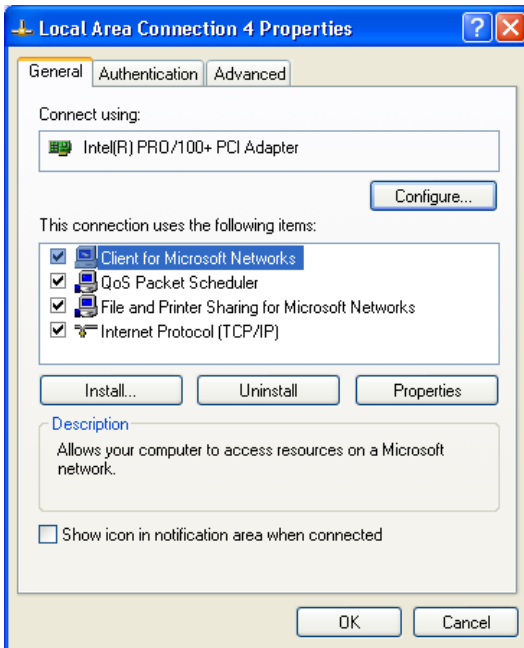


Figure 1: Local Area Connection Properties, Generals tab

**TCP/IP Protocol.** The TCP/IP protocol is configured by default upon delivery. The IP address is automatically assigned to the network card by a DHCP server.

If your network does not have a DHCP server, ask your network administrator for the necessary parameters, such as IP address and subnet mask. Type in the parameters as follows:

1. Open the *General* tab of the *Local Area Connection Properties* dialog box (see figure 1).
2. Press the *Properties* button in the *General* tab of the *Local Area Connection Properties* dialog box.

The *Internet Protocol (TCP/IP) Properties* dialog box opens.

3. Select *Use the following IP address* and enter your IP address and Subnet Mask.
4. Press the *OK* button to close the *Internet Protocol (TCP/IP) Properties* dialog box and the *Close* button to close the *Local Area Connection Properties* dialog box.



**CAUTION.** *Only the software components configured upon delivery guarantee faultless operation of the Protocol Tester.*

---

## Remote Operation

### Remote Desktop

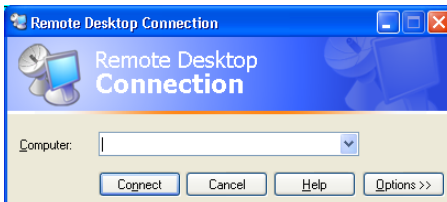
The protocol tester can be remotely operated with the help of Remote Desktop. Using Remote Desktop you can connect each Windows computer to a K1297. This allows you to remotely control your K1297 without being in field or test laboratory.

- Computers with operating system Windows XP Professional can be connected immediately to your K1297.
- To connect computers running Windows 95 or a more recent version of Windows to your K1297, you must install the Remote Desktop Connections Client software.

The Remote Desktop Connections Client software is available under *C:\Setup.etc* . To install it, start the *msrdpcli.exe* .

To activate Remote Desktop, proceed as follows:

1. Enable the Remote Desktop feature on your K1297: click *Start* → *Control Panel* → *System*. The *System Properties* dialog box opens.
2. Open the *Remote* tab and enable *Allow users to connect remotely to this computer*. Close the *System Properties* dialog box.
3. On the control computer side: Select *Start* → *All Programs* → *Accessories* → *Communications* → *Remote Desktop Connection*. The *Remote Desktop Connection* dialog box opens.



**Figure 2: Remote Desktop dialog box**

4. Enter the name of the K1297 and click **Connect**.



### **Remote Assistance**

Use Remote Assistance if you need remote support on your K1297. Using this feature you can invite somebody to connect to your K1297. During Remote Assistance both of you can operate the K1297.

To activate Remote Assistance, proceed as follows:

1. Click *Start* → *Control Panel* → *System*. The *System* dialog box opens.
2. Open the *Remote* tab and *enable Allow Remote Assistance invitations to be sent from this computer*.
3. Click *Start* → *Help and Support*. Click *Invite a friend to connect to your computer with Remote Assistance* under *Ask for assistance*.
4. Follow the Remote Assistance wizard.

## Connecting Peripherals

External devices can be connected to your K1297 in several ways. Some devices, such as keyboard, mouse, or USB devices, are connected to the front panels of the installed boards of your K1297. Other devices, like printers and external drives, are connected to ports on the rear panel of your protocol tester.

For a device to work properly with Windows, a device driver must be installed on the system. Each device is supported by one or more device drivers, which are typically supplied by the device manufacturer. However, some device drivers are included with the operating system. If the device is Plug and Play, Windows XPe can automatically detect it and install the appropriate device drivers.

If the device is not automatically installed by the operating system, the *Found New Hardware Wizard* will appear and ask you to insert any media, such as compact discs or floppy disks, that were provided with the device.

Non-Plug and Play devices are installed using the *Add Hardware Wizard*. To start this wizard, click *Start* → *Control Panel* → *Add Hardware*.

Before manually installing device drivers, you should consult the device documentation provided by the manufacturer.

You must be logged on as an Administrator or as a member of the Administrators group in order to install or configure a peripheral device.



**CAUTION.** *To avoid product damage, always power off the K1297 before installing any accessories.*

---



## Examples

The following chapter guides you step by step through the different aspects of working with the Protocol Tester. These are common applications relevant to many users.

---

**NOTE.** *The following chapter should help you get started by explaining the basic principles of the Protocol Tester in a clear and simple fashion.*

---

## Online Monitoring in a Network

You can use the Protocol Tester and E1/DS1 interface boards (PRIMO) to test the signalling in the following type of situations:

- In mobile networks at A<sub>bis</sub> interfaces between base station controller (BSC) and base transceiver station (BTS) or at A interfaces between mobile switching center (MSC) and base station controller (BSC)
- In fixed networks between switching systems or between subscriber and switching system.

### Preliminary Steps

1. Connect the Protocol Tester's PRIMO interface boards to the measuring sockets of the data line, using the appropriate cables.

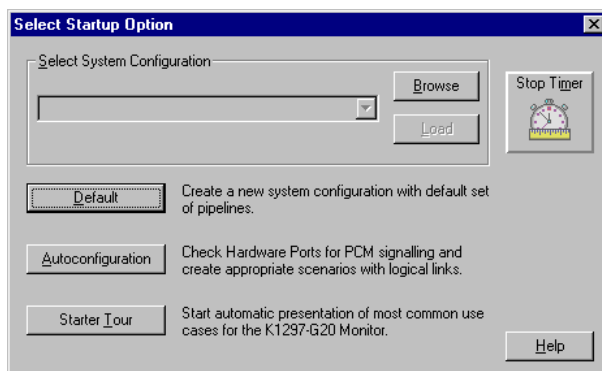
The interfaces on the PRIMO boards are 9-pin Sub-D sockets (refer to the previous chapter, section *Connecting to the data line* and to *Appendix A, Section E1/DS-1 Interface Board*).

2. Switch the device on.

The operating system boots automatically (refer to the previous chapter, section *Switching on the K1297*). The K1297-G20 Monitor application is started automatically.

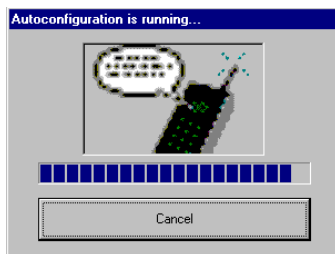
The *Status Window* shows status messages for the individual modules. If the modules boot without errors, the message "boot OK" will be displayed.

- The following dialog appears for loading the configuration:



- Click *Autoconfiguration*.

The autoconfiguration feature automatically detects the signalling channels and the framing of the connected data lines.



After the autoconfiguration has been carried out, the active signalling channels are available and you can start the measurement: the *Data Flow Window* appears. Make sure you are in the *Measurement Scenarios* pane.

---

**NOTE.** *The data line has not been connected properly, if the following message appears: “The initialization of PCM Check has been terminated! The previous configuration will be loaded.” In this case, check the connection between the Protocol Tester and the data line measuring sockets.*

*If you get the message “No signalling detected on any ports”, please restart the autoconfiguration. Start it now via the menu Tools: Autoconfiguration.*

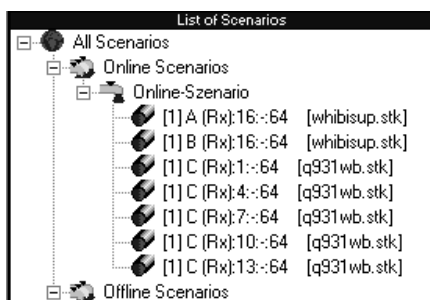
*Furthermore, take into account, that the autoconfiguration for LAP-based protocols depends on the received data amount during a measurement interval.*

---

## Starting Measurements

The autoconfiguration feature automatically defines an online data source (*Scenario*) and generates an online measurement scenario as a pipeline which contains several branches for individual measurement tasks. An online data source is a group of logical links. A logical link consists of a channel and a channel data interpretation rule (assigned protocol).

The settings for each data source, as detected by the autoconfiguration feature, are displayed in the expanded left part of the window under *List of Scenarios* (to expand, click “+”):

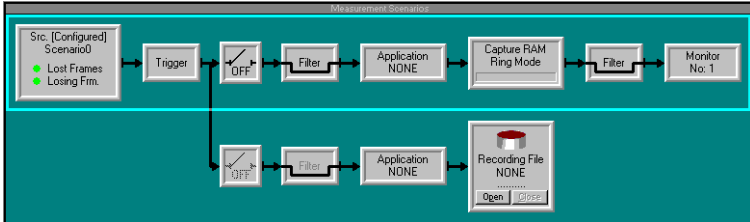


The following information is provided:

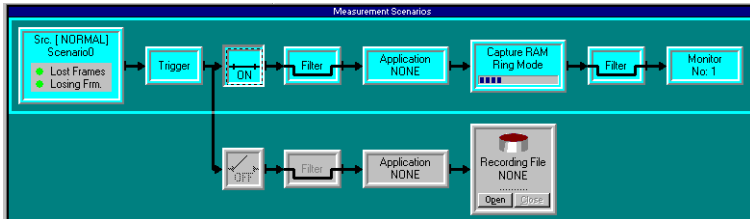
`[1]D(Rx):16::-64 [Whibisup.stk]` (example)

<code>1:</code>	first board
<code>A:</code>	port MON A
<code>(Rx)</code>	direction, here: Receive
<code>16::-64</code>	timeslot 16, no subchannel (-), with 64 kbit/s
<code>Whibisup.stk</code>	detected protocol setting, here: the stack for SS#7 White Book according to ITU-T

The right side of the window *Measurement Scenarios* contains the online measurement scenario as a pipeline with the two branches *Monitor* and *Recording File*.



5. To start online monitoring, click the ON/OFF switch of the *Monitor* pipeline branch to *ON*.



The pipeline of the activated data flow is now green: the measurement is running.

6. To view the signalling data of the activated data flow switch to the monitor main window by clicking the processing element *Monitor* at the right end of the pipeline.



## Online Monitoring

The monitor main window consists of three views (see each title bar). The Short View is shown in the upper part the window, the Frame View in the middle and the Packet View in the lower part. These three views display the data flow at different levels of complexity.

Short View				
Time	From	2. Prot	2. MSG	3. Prot
11:25:12,404,792	1/H/16	ISUP	REL	
11:25:12,430,285	1/G/16	ISUP	RLC	
11:25:12,496,673	1/H/16	ISUP	IAM	
11:25:12,526,534	1/G/16	ISUP	ACM	
11:25:12,530,285	1/G/16	ISUP	ANM	
11:25:13,099,410	1/G/16	ISUP	REL	
11:25:13,124,167	1/H/16	ISUP	RLC	

Frame View		
BITMASK	ID Name	Comment or Value
11:25:12,496,673	1/H/16 ISUP IAM	
MTP Level 2 (MTP-L2)		
--0101001	Backward Sequence Number	41
1-----	Backward Indicator Bit	1
-0101101	Forward Sequence Number	45
1-----	Forward Indicator Bit	1
--010101	Length Indicator	21
00-----	Spare	0
----0101	Service Indicator	ISDN User Part
--00----	Sub-Service: Priority	Spare/priority 0 (U.S.A. only)
10-----	Sub-Service: Network Ind	National message
**b14***	Destination Point Code	00-7-13-0
**b14***	Originating Point Code	01-7-10-0
ITU-T WHITE BOOK ISDN User Part (ISUP) IAM (= Initial Address)		
Initial Address		
0000----	Signalling Link Selection	0
**b12***	Circuit Ident Code	026-19
0000----	Spare	0
00000001	Message Type	1
-----00	Satellite Indicator	No satellite circuit
---00--	Continuity Chk Indicator	Cont Check not required

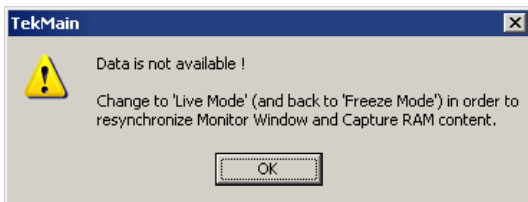
  

Packet View																
HEX	0	1	2	3	4	5	6	7	8	9	A	B	C	D	E	F
0	A9	AD	15	05	E8	03	F4	01	53	03	01	00	20	01	0A	00
10	02	00	05	03	10	21	43	65								

For Help, press F1

The data in each view is constantly updated. In **Live Mode** (indicated in the main window title bar), you can read the data as it is measured. This mode is set by default when you switch to the monitor main window.

If you click on a view and scroll the contents using the arrow keys (↓ and ↑), the system automatically switches into **Freeze Mode** (indicated in the main window title bar). The continuous display of new data frames is then suppressed. In the background, the measuring goes on, until the available storage is full. Then you receive the following error message:



Click the *Live Mode* button to return to live mode.

The **Short View** provides an overview and lists the detected data packets row by row in summary form.

You can choose which information is important for your own overview. Select *Monitor:Column Setup:Short View*.

The **Frame View** decodes the protocol parameters of a frame selected in Short View bit by bit and displays the results in plain text. The protocol parameters displayed depend on which protocol stacks are loaded.

You can choose how detailed the information should be displayed. Select *Monitor:Column Setup:Frame View*.

The **Packet View** displays the protocol parameters of a frame selected in Short View in hexadecimal, ASCII or EBCDIC.

## Recording and Reviewing Monitoring Data

The signalling data of the active data flow can be recorded in a special recording file for subsequent evaluation and/or offline analysis. This recording feature can be used in conjunction with or as an alternative to online monitoring.

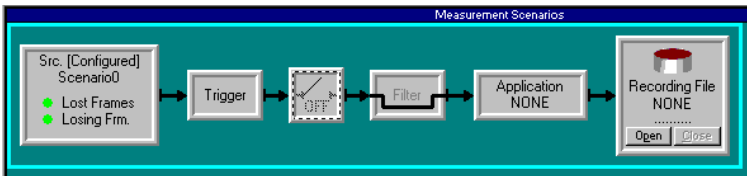
### Preliminary Steps

The Protocol Tester has been properly connected to the data line and turned on. The modules booted without errors and the application has been started.

Once the autoconfiguration has terminated successfully, the *Data Flow Window* appears (refer to “Preliminary Steps” in the previous section). Make sure you are in the *Measurement Scenarios* pane.

### Start Recording

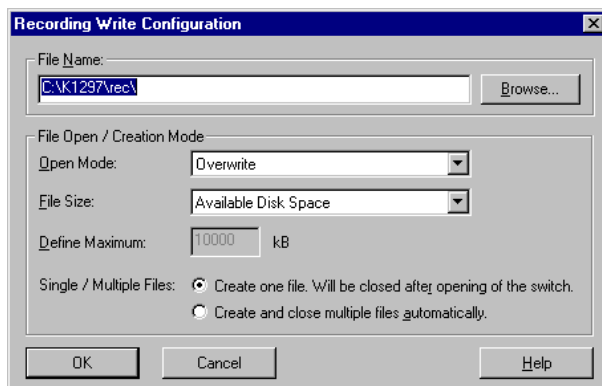
The right side of the window *Measurement Scenarios* contains a pipeline branch with the processing element *Recording File* at the right end of the pipeline, which displays a file icon. *NONE* signifies that no recording file has been created.



1. Click the processing element *Recording File* to create a recording file. The following window appears:



Choose one of the indicated files or create a new one by writing a name in **File name**. The following dialog box appears:



Storing all your recording files in `c:\k1297\rec\` facilitates the search for individual files later on.

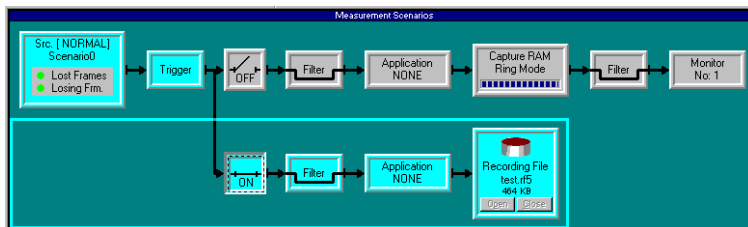
Press *Browse*, if you want to locate an existing file.

You do not need to enter the file extension “.rf5” for the recording files when entering the file name. The program appends it automatically.

The remaining settings are optional.

2. Confirm your entries with *OK*. The name of the recording file appears in the processing element *Recording File*.

- To start recording, click the ON/OFF switch of the *Recording* pipeline branch to *ON*.



The signalling data of the activated data flow are written to the recording file until the file is full or until you terminate the process. The data in the recording file can be read after the current measurement is complete.

You can stop recording by clicking the ON/OFF switch of the *Recording* branch to *OFF*.

---

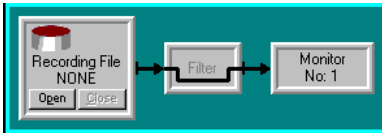
**NOTE.** In most cases, data are recorded and reviewed at different times. It is however possible to check the contents of the recording file immediately after recording data. A description on how to review recorded data you find on the following pages.

---

### Reviewing Recorded Data

Proceed as follows to view the signalling data stored in a recording file with the record viewer.

1. Start the record viewer by clicking the **Rec View** icon in the pipeline selection toolbar and drag it in the green measurement scenario window . The pipeline of the Record Viewer appears in the **Measurement Scenarios**:



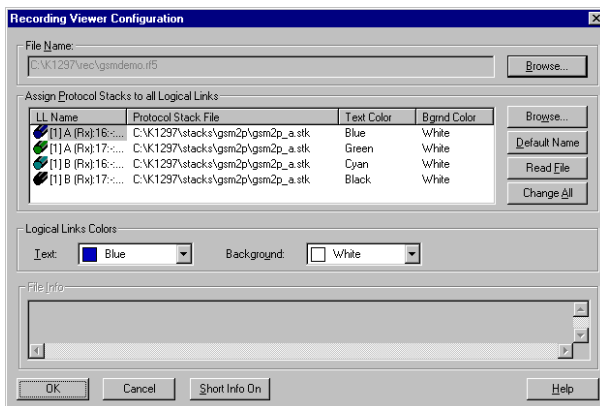
2. Click the left processing element (pipeline element) *Recording File* in the Record Viewer pipeline. The following dialog box appears:



Select the recording file you want to work with by double-clicking it. K1297-G20 and K1205 recording files end with ".rf5". K1103 recording files end with ".rec". K1297 and K1197 recording files end with ".dat".

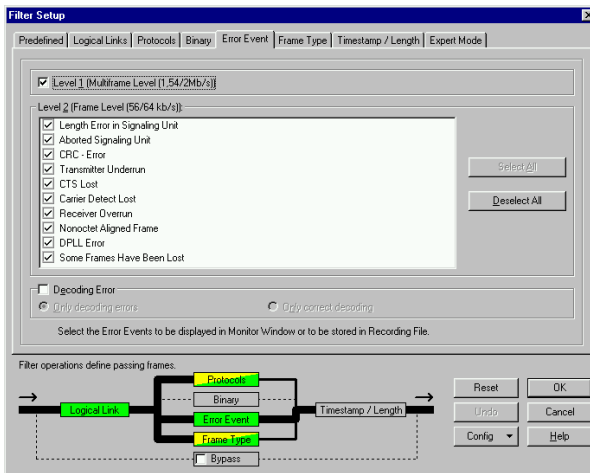


3. With the following dialog box you can then change the protocol stacks assigned to the logical links.



Confirm your selection with *OK*. The name of the recording file is entered automatically into the *Recording File* processing element. The pipeline of the activated data flow is now green.

- If you want to filter the signalling data according to certain criteria, such as error events, proceed as follows: First click the pipeline processing element *Filter*, then within the *Filter Setup* window click *Error Event*. The following figure shows the *Filter Setup* dialog for the *Display Filter*.



Proceed with your settings and confirm your selection with *OK*.

- To view the signalling data switch to the monitor main window by clicking the processing element *Monitor* at the right end of the pipeline. The monitor main window with the three views appears. You can scroll through the recorded data flow using the arrow keys (↓ and ↑) in the individual views.

## Calltrace

The Calltrace application can detect and trace one or several calls on the basis of complete or partial phone numbers. Calltrace analyzes protocol-specific data and produces a text output for any found hit. The Calltrace can be run in the following three modi:

**Calltrace only Mode.**In this mode the calltrace searches for a frame that matches the user selected parameters. The analysis and the result can be seen at once.

**Sequenced Calltrace Mode.** In this mode all messages of one call will be collected (stored) until the CT can make a decision whether the current call matches the parameters or not. This representation is more focussed, because it is related to one call.

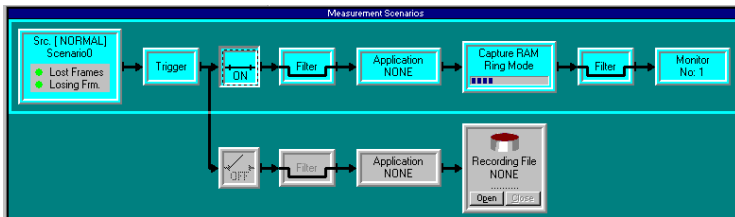
**Sequence only Mode.** This mode works just like the sequenced Calltrace mode, apart from the fact, that no numbers can be entered. All messages are simply sequenced, i.e. sorted by calls and then displayed if the call has been released. A search criteria is not possible here.

Calltrace applications are offered for a variety of protocols. All applications are operating according to the same principles. In this section, the ISUP Calltrace is given as an example.

### Preliminary Steps

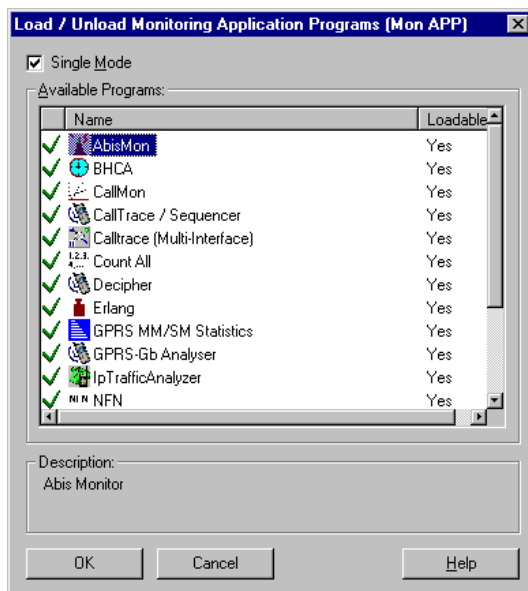
The Protocol Tester has been properly connected to the data line and turned on. The modules booted without error and the application has been started.

Once the autoconfiguration has terminated successfully, the *Data Flow Window* appears (refer to “Preliminary Steps” in the previous section). Make sure you are in the *Measurement Scenarios* pane.



## Preparing and Starting a Calltrace

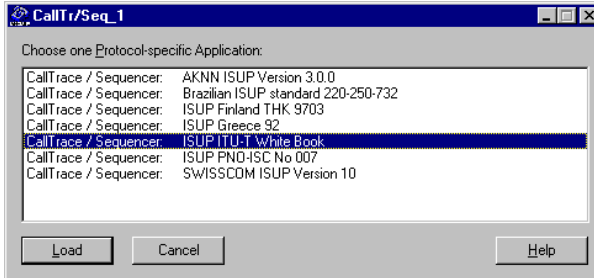
1. Click the processing element *Application* in the pipeline, which you will find either in the monitor branch or in the recording branch. The following dialog box appears:



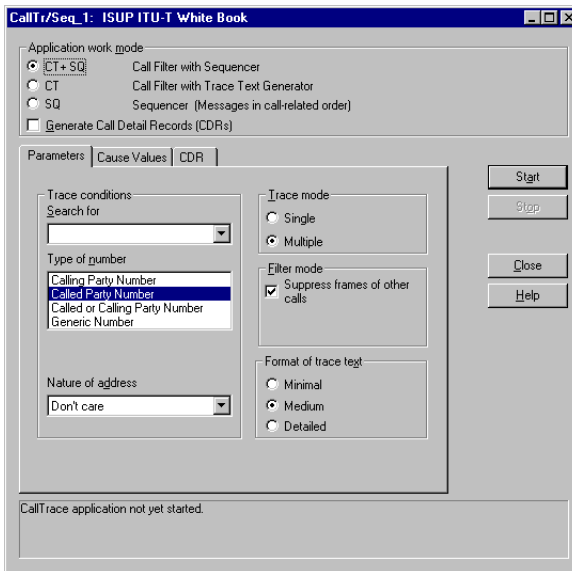
2. Select *CallTr/Seq* from the list of available applications and confirm your selection with *OK*.

Calltrace analyzes the data traffic of a variety of protocols. Therefore, you have to select the protocol to be tested before starting Calltrace. The *Calltr/Seq\_1* window appears.

3. Select the protocol from the protocol list on the basis of which the calltrace is to be performed.



4. Confirm your selection with *Load*. The *CallTr/Seq\_1: ISUP ITU-T White book* window then appears (example). Depending on the Calltrace selected this window can slightly vary.



5. Enter the phone number you are looking for under *Search for*. You can enter up to four numbers divided by commas (.). The following wildcards for digits are allowed: + for exactly one digit or no digit, \* for any number of digits, ? for exactly one digit.

You can enter more than one asterisk (\*) within a calling number (for example \*123\*678). One asterisk is always automatically entered at the end of the number. Thus, numbers that are too long can be found. If calling numbers are initiated by + or \* the filter mode starts working only after the number is confirmed by an ACM (Address complete) or an ANM (Answer message). That means that all messages are transmitted until then, because they belong to a call with a corresponding number.

If you are looking for numbers with prefixes (for example international area code) at one and the same time, you will get more specific outputs by entering the exact numbers (for example 4930386, 30386) than by entering numbers initiated by “+” or “\*” (+30386, \*30386).

6. Specify whether the phone number designates a *Calling Party* or a *Called Party* in the *Type of number* field.
7. Specify whether it is a *National*, an *International* or a *Subscriber* number without a national/international area code in the *Nature of Address* field. Select *don't care* to include all numbers.
8. For protocols you can specify *Cause Values* as additional search criteria. The Calltrace application then searches for calls that contain the desired number *and* one of the selected cause values (reason for the end of call).
9. Specify the number of calls to be traced in the *Trace mode* field: one (*Single*) or any number of matching phone numbers (*Multiple*).

If you activate the filter mode, only the calltrace messages will be displayed. Other messages will be suppressed. The asterisk (\*) at the beginning leads to more detailed information.

10. Click *Start* to start Calltrace.

The results are displayed in the monitor main window.

11. Switch to the monitor main window by clicking the processing element *Monitor* at the right end of the pipeline under *Measurement Scenarios* in the *Data Flow Window*.



## Viewing the Results

Click the Short View in the monitor window. Use the arrow keys (↓ and ↑) to scroll through the recorded data flow in the individual views.

Detailed information is displayed in plain text in the Frame View on the right.

Short View					
Time	From	2. Prot	2. MSG	3. Prot	3. MSG
11:25:11,717,535	1/G/16	ISUP	REL		
10:12:53,386,893	1/G/16	text			
10:12:53,386,893	1/G/16	text	=== CallTrac e applicatio n U 1.20 f		
10:12:53,386,893	1/G/16	text	=== 2048 con nections can be monitore		
11:25:11,742,417	1/H/16	ISUP	RLC		
11:25:11,808,660	1/G/16	ISUP	IAM		
11:25:11,839,167	1/H/16	ISUP	ACH		
10:12:53,386,893	1/G/16	text			
10:12:53,386,893	1/G/16	text	=== CallTrac e applicatio n started wi		
10:12:53,386,893	1/G/16	text	=== followin g parameter set [1] :		
10:12:53,386,893	1/G/16	text	===		
10:12:53,386,893	1/G/16	text	=== Applicat ion work mod e: Call Fil		
10:12:53,386,893	1/G/16	text	=== Number: 12345?		
10:12:53,386,893	1/G/16	text	=== Type of Number: Called P		
10:12:53,386,893	1/G/16	text	=== Nature o f address: don't ca		
10:12:53,386,893	1/G/16	text	=== Trace no de: Multiple		
10:12:53,386,893	1/G/16	text	=== Filter m ode: Suppress		
10:12:53,386,893	1/G/16	text	=== Format o f trace text : Medium		
10:12:53,386,893	1/G/16	text	===		
Frame View					
BITHASK	ID Name	Comment or Value			
11:25:11,808,660	1/G/16 ISUP IAM				
MTP Level 2 (MTP-L2)					
--0101001	Backward Sequence Number	41			
1-----	Backward Indicator Bit	1			
--0101000	Forward Sequence Number	40			
1-----	Forward Indicator Bit	1			
--010101	Length Indicator	21			
00-----	Spare	0			
---0101	Service Indicator	ISDN User Part			
---00----	Sub-Service: Priority	Spare/priority 0 (U.S.A. only)			
10-----	Sub-Service: Network Ind	National message			
**b14***	Destination Point Code	01-7-10-0			
**h14***	Originating Point Code	00-7-10-0			

Calltrace outputs the word *text* in the *2. Protocol* column (Short View) and displays detailed information in the data frame context.

**Examples.** The number you were tracing was found:

Short View						
Time	From	2. Prot	2. MSG	3. Prot	3. MSG	
11:25:54,588,926	1/G/16	text	=====		=====	
11:25:54,588,926	1/G/16	text	=== START of call 1 [2]			
11:25:54,588,926	1/G/16	text	=== Number found.			
11:25:54,588,926	1/G/16	text	=== Information for this connection:			
11:25:54,588,926	1/G/16	text	=== CIC = 91 2 (PCM: 28 Channel:16)			
11:25:54,588,926	1/G/16	text	=== Called number = 123 456			
11:25:54,619,913	1/H/16	ISUP	IAM			
11:25:54,619,913	1/H/16	ISUP	ACH			
11:25:54,622,789	1/H/16	ISUP	ANH			
11:25:54,622,789	1/H/16	text	=== CONNECTION established.			
11:25:55,192,788	1/H/16	ISUP	REL			

Frame View			
BITMASK	ID Name	Comment or Value	
11:25:54,588,926	1/G/16	text	=== Number found.
=== Number found.			

You have been connected to the number you were tracing:

Short View						
Time	From	2. Prot	2. MSG	3. Prot	3. MSG	
11:25:54,588,926	1/G/16	text	=== Number found.			
11:25:54,588,926	1/G/16	text	=== Information for this connection:			
11:25:54,588,926	1/G/16	text	=== CIC = 91 2 (PCM: 28 Channel:16)			
11:25:54,588,926	1/G/16	text	=== Called number = 123 456			
11:25:54,588,926	1/G/16	ISUP	IAM			
11:25:54,619,913	1/H/16	ISUP	ACH			
11:25:54,622,789	1/H/16	ISUP	ANH			
11:25:54,622,789	1/H/16	text	=== CONNECTION established.			
11:25:55,192,788	1/H/16	ISUP	REL			
11:25:55,192,788	1/H/16	text	=== CONNECTION is being released			
11:25:55,192,788	1/H/16	text	=== CIC = 91 2 (PCM: 28 Channel:16)			
11:25:55,192,788	1/H/16	text	=== Release Cause: Normal call clear			
11:25:55,217,406	1/G/16	ISUP	RLC			
11:25:55,217,406	1/G/16	text	=== CONNECTION finished (ISUP release)			
11:25:55,217,406	1/G/16	text	=== Call duration (ANH < -> REL): 0.			
11:25:55,217,406	1/G/16	text	=== END of call 1 [2]			

Frame View			
BITMASK	ID Name	Comment or Value	
11:25:54,622,789	1/H/16	text	=== CONNECTION established.
=== CONNECTION established.			

The connection has been cleared down (released):

Short View						
Time	From	2. Prot	2. MSG	3. Prot	3. MSG	
11:25:55,192,788	1/H/16	ISUP	REL			
11:25:55,192,788	1/H/16	text	=== CONNECTION is being released			
11:25:55,192,788	1/H/16	text	=== CIC = 91 2 (PCM: 28 Channel:16)			
11:25:55,192,788	1/H/16	text	=== Release Cause: Normal call clear			
11:25:55,217,406	1/G/16	ISUP	RLC			
11:25:55,217,406	1/G/16	text	=== CONNECTION finished (ISUP release)			
11:25:55,217,406	1/G/16	text	=== Call duration (ANH < -> REL): 0.			
11:25:55,217,406	1/G/16	text	=== END of call 1 [2]			
11:25:55,283,788	1/H/16	text	=====		=====	
11:25:55,283,788	1/H/16	text	=== START of call 2 [2]			
11:25:55,283,788	1/H/16	text	=== Number found.			
11:25:55,283,788	1/H/16	text	=== Information for this connection:			
11:25:55,283,788	1/H/16	text	=== CIC = 91 3 (PCM: 28 Channel:17)			
11:25:55,283,788	1/H/16	text	=== Called number = 123 456			
11:25:55,283,788	1/H/16	ISUP	IAM			
11:25:55,314,531	1/G/16	ISUP	ACH			
11:25:55,314,531	1/G/16	ISUP	ANH			

Frame View			
BITMASK	ID Name	Comment or Value	
11:25:55,217,406	1/G/16	text	=== CONNECTION finished (ISUP release)
=== CONNECTION finished (ISUP release)			

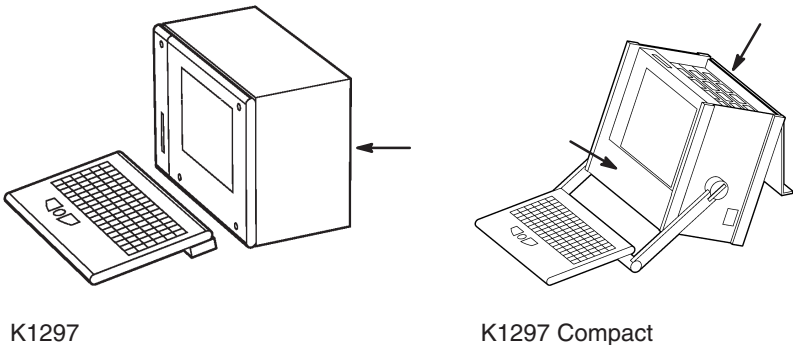
**Ending Calltrace**

You end the Calltrace application by clicking the processing element *Application* in the pipeline in the monitor window. The window *CallTr/Seq-1: ISUP ITU-T White book* appears. Click *Close*.



# Appendix A: Interfaces

**K1297 and K1297 Compact.** The location of the interfaces is shown in the following figure.



K1297

K1297 Compact

→ Location of interfaces

**K1297.** Interfaces are on the rear of the device, on the PC module front panel and on the front panels of the measuring modules.

**K1297 Compact.** Interfaces are on the PC module front panel and on the front panels of the measuring modules on top of the device underneath the device cover. Further interfaces are located behind the front cover beneath the display.

The individual interfaces are described in detail in the following sections.

## System Unit

The system unit contains the system processor PC as its main component. The processor coordinates control and sequence of the user processes. Further components are: keyboard, monitor, and floppy disk drive. A switched mode mains power supply and regulated fans serve for supply and ventilation of the modules.



---

**CAUTION.** *Two green LEDs on the front of device indicate the active operating state of the system processor and the SCSI connection. In alarm state (fan or cooling alert), the LED turn red. In this case switch off the device immediately and contact the service support.*

---

### PC-4 Board / PC-5, 512 Board / PC-6 Board

The Intel-based PC boards are VME bus boards with a Celeron or Pentium III system processor.

Depending on the display, the K1297 is equipped with either a PC-4 (for NEC displays) or a PC-5 / PC-6 board (for Hyundai displays).

The VGA graphics card supports flat screen, external monitor, and dual display mode.

The following interfaces are located on the front panels of the PC boards:

- USB interface
- LPT interface
- Ethernet, twisted pair connections (100BaseTx)
- VGA interface
- Headphone sound port
- Two PC-Card (PCMCIA) slots for type II
- Standard connections for peripherals (keyboard connections, parallel and serial interfaces)

**Table A-1: Pin assignment for the USB interface**

Pin	Assignment	Pin	Assignment
1	5 V	3	USB_P0+
2	USB_P0-	4	Ground

In addition, the K1297 operates with a PC AT backplane. This bus system offers the possibility to mount up to three ISA cards, such as an ISDN PC card for remote control or even for other applications, such as a multimedia card. The length of the additional cards is designed for two thirds of AT card format.

**Reset.** To reset the Protocol Tester in an emergency, use a pointed tool and insert it into the RESET switch located on the cover of the PC board. There is also an LED indicating the operating state of the hard disk (HD) and an LED indicating network operation.



### Keyboard Interface (KEYBOARD)

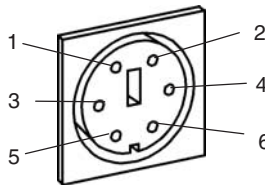
**K1297.** The K1297 KEYBOARD interface is accessible from the bottom of the device. It is covered by a metal sheet which you have to remove first.

**K1297 Compact.** The K1297 Compact KEYBOARD interface is behind the bottom cover of the device.

---

**NOTE.** *If the additional keyboard interface (KBD) is used with an external keyboard, the keyboard connector must not be plugged in.*

---



**Table A-2: Pin assignment for the KEYBOARD interface (PS/2 interface)**

Pin	Assignment	Pin	Assignment
1	Keyboard data	4	+ 5 V
2	PS/2 Mouse data	5	Keyboard clock
3	Ground	6	PS/2 Mouse clock

### Additional Keyboard's Interface (KBD)

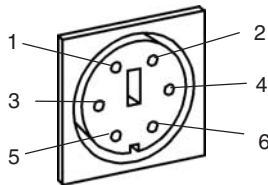
**K1297.** The interface of the external keyboard is on the rear of the device on the PC module front panel.

**K1297 Compact.** The interface of the external keyboard is on top of the device on the PC module front panel.

---

**NOTE.** If the additional keyboard interface KBD is used with an external keyboard, the **KEYBOARD** connector must not be plugged in.

---



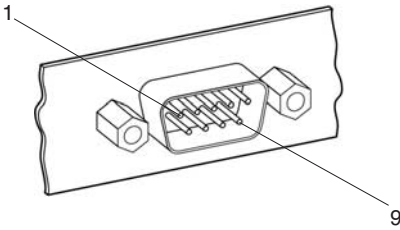
**Table A-3: Pin assignment for interface KBD (PS/2 interface)**

Pin	Assignment	Pin	Assignment
1	Keyboard data	4	+ 5 V
2	PS/2 Mouse data	5	Keyboard clock
3	Ground	6	PS/2 Mouse clock

### Serial Interface (COM1)

**K1297.** The serial interface COM1 is on the rear of the device on the PC module front panel.

**K1297 Compact.** The serial interface COM1 is on top of the device on the PC module front panel.



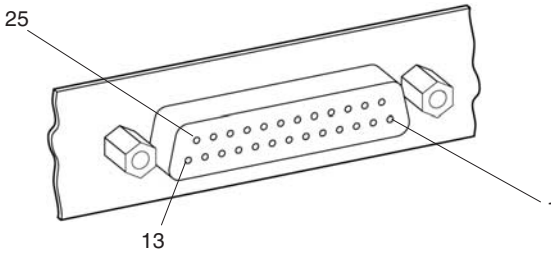
**Table A-4: Pin assignment for interface COM1**

Pin	Assignment	Pin	Assignment
1	DCD	6	DSR
2	RxD	7	RTS
3	TxD	8	CTS
4	DTR	9	RI
5	Ground		

**Parallel Interface (LPT1)**

**K1297.** The parallel interface is on the rear of the device on the PC module front panel.

**K1297 Compact.** The parallel interface is on top of the device on the PC module front panel.



**Table A-5: Pin assignment for interface LPT1**

Pin	Assignment	Pin	Assignment
1	STROBE	14	Auto feed
2	DB0	15	Error
3	DB1	16	Initialize
4	DB2	17	Select input
5	DB3	18	Ground
6	DB4	19	Ground
7	DB5	20	Ground
8	DB6	21	Ground
9	DB7	22	Ground
10	ACK	23	Ground
11	BSY	24	Ground

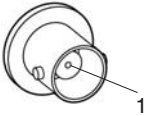
**Table A-5: Pin assignment for interface LPT1 (Cont.)**

<b>Pin</b>	<b>Assignment</b>	<b>Pin</b>	<b>Assignment</b>
12	Paper end	25	Ground
13	Select		

**Ethernet BNC Interface (10Base-2)**

**K1297.** The ethernet BNC socket is on the rear of the device on the PC module front panel.

**K1297 Compact.** The ethernet BNC socket is on top of the device on the PC module front panel.



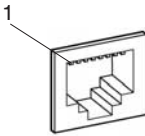
**Table A-6: Pin assignment for interface 10Base-2**

Pin	Assignment	Pin	Assignment
1	RXI/TXo	2	CDS (Signal ground)

### Ethernet Twisted Pair Interface (10Base-T)

**K1297.** The ethernet twisted pair interface is on the rear of the device on the PC module front panel.

**K1297 Compact.** The ethernet twisted pair interface is on top of the device on the PC module front panel.



**Table A-7: Pin assignment for interface 10Base-T**

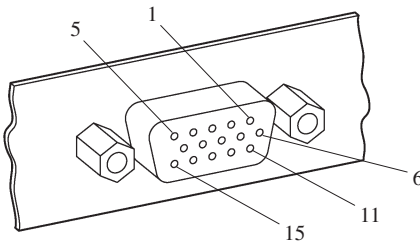
Pin	Assignment	Pin	Assignment
1	TxD +	5	Not connected
2	TxD –	6	RxD –
3	RxD +	7	Not connected
4	Not connected	8	Not connected

### External Monitor's Interface (VGA)

**K1297.** The interface for an external VGA monitor is on the rear of the device on the PC module front panel.

**K1297 Compact.** The interface for an external VGA monitor is on top of the device on the PC module front panel.

The External Monitor's Interface supports a resolution of up to 1024x768 with 60 Hz.



**Table A-8: Pin assignment for interface VGA**

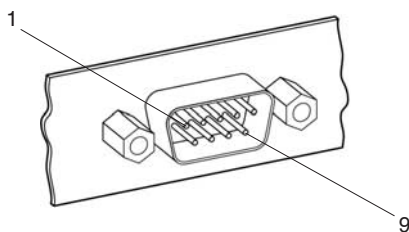
Pin	Assignment	Pin	Assignment
1	Red	9	Not connected
2	Green	10	Ground
3	Blue	11	Not connected
4	Not connected	12	Monitor data
5	Ground	13	HSY
6	Ground	14	NC
7	Ground	15	Monitor data
8	Ground		



### Serial Interface (COM2)

**K1297.** The serial interface (COM2) is on the rear of the device next to the PC module front panel.

**K1297 Compact.** The serial interface (COM2) is behind the front cover beneath the display.



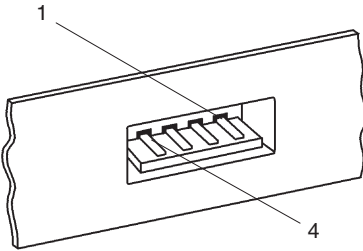
**Table A-9: Pin assignment for interface COM2**

Pin	Assignment	Pin	Assignment
1	DCD	6	DSR
2	RxD	7	RTS
3	TxD	8	CTS
4	DTR	9	RI
5	Ground		

### USB (Universal Serial Bus)

**K1297.** The USB interface is on the rear of the device on the PC module front panel.

**K1297 Compact.** The USB interface is on top of the device on the PC module front panel.



**Table A-10: Pin assignment for the USB interface**

Pin	Assignment	Pin	Assignment
1	Vcc	3	Data+
2	Data-	4	Ground

---

**NOTE.** *The USB interface is not supported when using Windows NT.*

---

**Alarm and Synchronising Option (RELAIS and CLK I/O)**

**K1297.** The alarm and synchronising sockets are on the rear of the device in the left bottom corner.

**K1297 Compact.** The alarm and synchronising sockets are behind the front cover beneath the display.



The following voltages are the maximum turn-off voltages that you may apply:

42 V AC peak with maximum turn-off current 5 A or

30 V DC with maximum turn-off current 5 A or

60 V DC with maximum turn-off current 1.5 A resistive load or

60 V DC with maximum turn-off current 0.5 A non-resistive load.

The maximum relay ratings are:

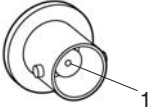
250 V AC with 5 A or

30 V DC with 5 A or

60 V DC with 1.5 A resistive load or

60 V DC with 0.5 A non-resistive load .

The synchronizing sockets can be used for data or timestamp synchronization of several Protocol Tester and for clock synchronization of interface boards.



**Table A-11: Pin assignment for interface CLK I/O**

Pin	Assignment	Pin	Assignment
1	Rx	2	CDS (Signal ground)

---

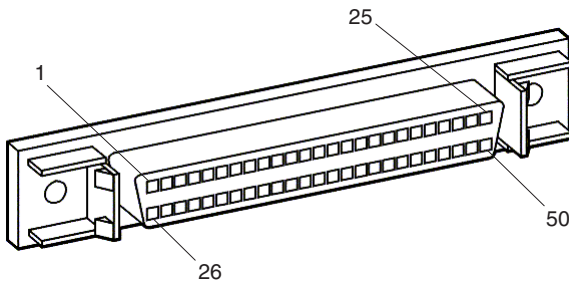
**NOTE.** *The described options will need to be enabled by the appropriate software.*

---

### SCSI Interface (SCSI I/O BUS)

**K1297.** The SCSI interface is on the rear of the device in the right bottom corner.

**K1297 Compact.** The SCSI interface is behind the front cover beneath the display.



Up to six peripheral devices can be connected to the controller of the system processor via the SCSI socket. Each peripheral device must be assigned an individual address (SCSI ID). The controller occupies address 7 as standard. Since the controller boots from the device with the lowest address, the internal hard disk of the Protocol Tester is set to address 1. When not connected with a peripheral device the SCSI socket is terminated automatically.

The interface is single ended.

---

**NOTE.** Assign one of the free addresses 2 - 6 to the devices that you want to operate via the external SCSI connection. Do not assign address 1, if you want to boot from an external device. Set the SCSI address to 0. Switch on the Protocol Tester first and before switching on the SCSI connected device.

---

**Table A-12: Pin assignment for interface SCSI I/O**

Pin	Assignment	Pin	Assignment
1	Ground	26	D0
2	Ground	27	D1
3	Ground	28	D2
4	Ground	29	D3
5	Ground	30	D4
6	Ground	31	D5
7	Ground	32	D6
8	Ground	33	D7
9	Ground	34	DP
10	Ground	35	Ground
11	Ground	36	Ground
12	Ground	37	Ground
13	Ground	38	TERMPWR
14	Ground	39	Ground
15	Ground	40	Ground
16	Ground	41	ATN
17	Ground	42	Ground
18	Ground	43	BSY
19	Ground	44	ACK
20	Ground	45	RST
21	Ground	46	MSG
22	Ground	47	SEL
23	Ground	48	C/D
24	Ground	49	REQ
25	Ground	50	I/O

### Connecting Wide SCSI-3 Devices (68 Pins)

It is possible to connect a wide SCSI-3 device (68 pins) to the K1297 Protocol Tester using the delivered SCSI adapter.

The SCSI interface of your Protocol Tester is wired like a SCSI-1 interface. To connect a wide SCSI-3 device (68 pins) you need this specially qualified 50-to-68 pins SCSI adapter.




---

**CAUTION.** *Some commercially-made adapters may cause a short circuit between TERMPWR and GROUND if they connect pins 12, 13 and 37 of the 50 pins SCSI interface to pins 17, 18 and 51 of the wide 68 pins SCSI interface. Such an internal wiring will cause the failure of the SCSI connection.*

---

Use only the SCSI adapter delivered with your Protocol Tester.

The following table shows the crucial pin connections of the qualified Tektronix 50-to-68 pin SCSI adapter:

**Table A-13: Correct internal pin assignment of 50-to-68 pin SCSI adapter**

Pin of 50-pin SCSI interface	Required internal connection	Pin of 68-pin SCSI interface
12	Not connected	17
13	Not connected	18
37	Not connected	51

### PC Card Slots

**K1297.** Two PC card slots (for type I or II or PCMCIA cards) are on the rear of the device on the PC module front panel.

**K1297 Compact.** The PC card slots are on top of the K1297 Compact.

You can connect modem or ISDN PC cards to the PC card slots for remote operation of the Protocol Tester or even portable data carriers using the appropriate plug.



**CAUTION.** *The power input of the PC card must not exceed 600 mA (with +5 V) or 60 mA (with +12 V).*

*Please read the documentation for the PC card and follow the PC card manufacturer's instructions.*

*Do not forcibly install or remove a PC card. To avoid equipment damage, do not insert foreign objects into the PC card slots.*

---



## AP-4 and AP-4/256 Board

The Additional Processor Board (AP-4) is a single slot card that increases the K1297-G20 Monitor's processing power by a factor of 5 to 10 depending on the application.

When using 3 or more measurement cards it is recommended to include the AP-4 card; it is necessary when using 5 or 6 boards in the K1297 benchtop device.

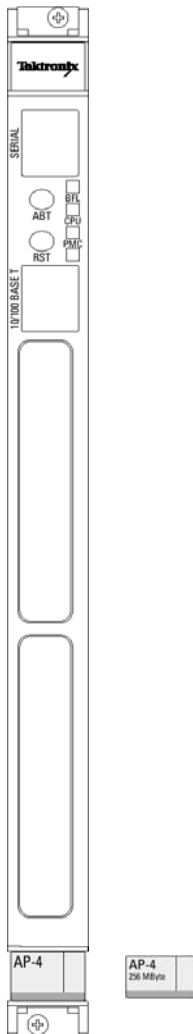
AP-4 and AP-4/256 boards provide the following features:

- 64 or 256 MB Memory Capacity
- 1 MB Memory L2 Cache
- 140 MHz Memory Cache Bus Clock Frequency
- 350 MHz Processor Clock Frequency
- Serial interface via RJ45 front panel connector
- Ethernet interface (10-BaseT/100-BaseTx) via RJ45 front panel connector
- Two PCI Mezzanine card slots

---

**NOTE.** AP-4/256 boards require software version K1205 V2.30 or above.

---



**Figure A-1: AP-4, AP-4/256 Board**

**K1297.** For the K1297 the usage of an AP-4 or AP-4/256 board depends on the number of interface boards.

**K1297 Compact.** For the K1297 Compact the AP-4 or AP-4/256 board is optional.

For configurations with 1 or 2 interface boards an AP-4 or AP-4/256 board will only be needed for heavy demanding applications. Using an AP-4 or AP-4/256 board speeds up decoding approximately by factor 10. The disk throughput performance raises by at least factor 2.

For configurations using 3 and 4 interface boards we recommend using an appropriate processor also for lighter loads.

For configurations with 5 and 6 interfaces the AP-4 or AP-4/256 board is mandatory.

---

**NOTE.** *Keep in mind that using an additional application processor in the K1297/K1297 Compact housing needs an additional VME bus slot.*

---



---

**CAUTION.** *Before installing a new board ensure that the VME bus address is set correctly (cf. chapter Getting Started, section Exchanging Measuring Modules).*

*Defining new CPU numbers must be performed at an ESD approved workplace. Electrostatic discharge can permanently destroy components that have to be temporarily removed from your device.*

---

**Working With Two AP-4 / AP-4/256 Boards.** Upon delivery, AP-4 boards are set to "0". If you work with a second AP-4 board, make sure its VME bus address (CPU number) is set correctly.

The VME bus addresses throughout the system must be unique. The AP-4 and Ethernet boards require an odd address number. In addition, the next even address number must NOT be used in the system:

- A system with a second AP-4 board with VME address "7" (and "8" implicitly) works fine if there are no other board conflicts with "7" and "8".
- A system with a second AP-4 board with VME address "3" (and "4" implicitly) plus an E1/DS1 Emulation board with VME address "1" works fine if there are no other board conflicts with "3", "4", and "1".



**CAUTION.** *The PC board is set to address "9" upon delivery (and "10" implicitly), and the first AP board is set to address 0. Never change the addresses of the PC board and the first AP-4 board.*

---

See the description on how to define CPU numbers of the Ethernet board on page A-56 and proceed accordingly if you want to work with a second AP-4 board.

The *Status Window* displays the VME addresses that are in use (however, the implicitly used numbers for boards such as AP-4 and ETH-100 are not displayed).



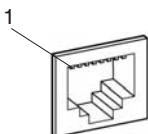
**CAUTION.** *Only a qualified service technician should perform this procedure at an ESD approved workplace. To avoid injury and to prevent damage to the board or any products connected, review all safety precautions in the User Manual when adapting CPU numbers.*

---

The following interfaces are located on the front panel of the AP-4 / AP-4/256 board:

- Serial interface
- 10BaseT / 100BaseTX

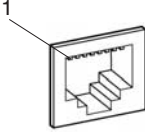
The SERIAL interface (RJ45 connector) can be used as asynchronous serial debug port for service purposes.



**Table A-14: Pin assignment for the SERIAL interface (DTE)**

Pin	Assignment	Pin	Assignment
1	DCD	5	RxD
2	RTS	6	Ground
3	Ground	7	CTS
4	TxD	8	DTR

In addition an RJ45 10-BaseT/100-BaseT connector is provided on the AP-4 or AP-4/256 front panel (for future use, not yet supported).



**Table A-15: Pin assignment for the 10Base-T/100Base-Tx interface**

Pin	Assignment	Pin	Assignment
1	TD +	5	Not connected
2	TD -	6	RD -
3	RD +	7	Not connected
4	Not connected	8	Not connected

The two switches on the front panel have the following function:

ABT                      Abort (for future use, not yet software supported)  
 RST                      Reset all onboard devices



**CAUTION.** *ABT and RST are for future use. They are not yet supported. Please do not touch.*

The four status LEDs on the front panel have the following meaning:

BFL                      Board failure  
 CPU                      CPU is accessing the bus  
 PMC                      Top PCI mezzanine card, if installed, is active  
 PMC                      Bottom PCI mezzanine card, if installed, is active

## BAI Board

The BAI board (Basic Access Interface) is required for measurements on ISDN lines and connections. The BAI board can be fitted with up to two interface modules depending on the purpose of application. The interface modules establish the necessary different circuits dependent on the interface standard.

---

**NOTE.** *EN 60950, IEC 950, UL 1950: The interface boards are designed for connecting to a telecommunication network (TNV-1 circuits); the appropriate interfaces are provided.*

---

The supply voltage necessary for supplying power to the terminal equipment to be tested is supplied by a separate supply module, which is plugged on the interface board and connected to the base module.



---

**WARNING.** *High voltages may occur on the following supply connectors and sockets: under “S<sub>0</sub> Simulation / Monitoring” with “TE A” or “TE M”, “MON A B” or “MON M N”, “TE/NT B” or “TE/NT N”; under “U<sub>2BIQ</sub> Simulation / active Monitoring” with “LT A” or “LT M” and “NT/LT B” or “NT/LT N”.*

*With older front panels the following supply connectors and sockets are concerned: “to NT”, “S-BUS MON”, “to TE(NT)”, “to LT”, “to NT(LT)”. These older terms are marked in the following with old.*

---

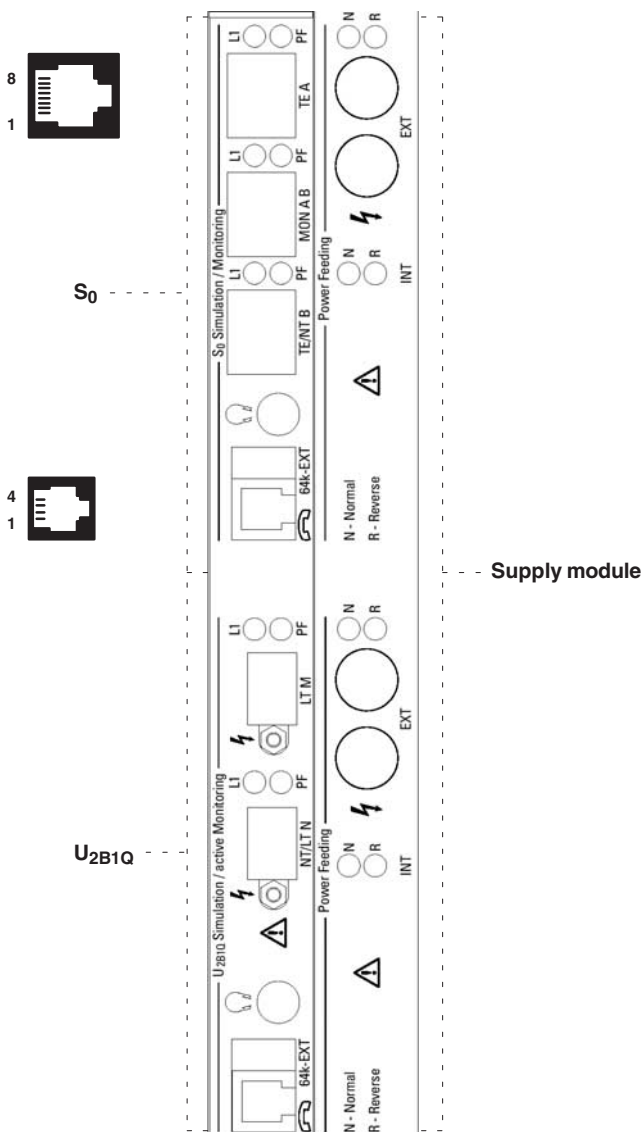


Figure A-2: BAI board with S<sub>0</sub> and U<sub>2B1Q</sub> Interface



### S<sub>0</sub> Interface Module

The S<sub>0</sub> interface module provides three RJ45 connectors for line connection, which are designated as follows:

- “TE A” or “TE M” (old: “to NT”)
- “MON A B” or “MON M N” (old: “S-BUS MON”)
- “TE/NT B” or “TE/NT N” (old: “to TE(NT)”)

**Modes of Operation.** To monitor lines with the S<sub>0</sub> interface module, proceed as follows:

1. Deactivate the line and connect the S bus with connector “MON A B”/“MON MN”.
2. Activate the line from the NT or TE.



**CAUTION.** Make sure to only use the “MON A B”/“MON M N” connector when connecting the S bus.

---

**Line status.** Two LEDs, “L1” (Layer 1 activated) and “PF” (Power Feeding), are assigned to each line connector. The LEDs indicate the line status, as shown in the following table.

**Table A-16: Line status S<sub>0</sub> interface module**

<b>L1</b>	<b>PF</b>	<b>Meaning</b>
on	on	After booting: Reset of the interface. Else: Activated, normal power feeding
alternating with PF	alternating with L1	Port is initialized and deactivated: Activate. Internal: deactivated, no power feeding
on	off	Activated, no power feeding
off	on	Deactivated, normal power feeding
off	blinking	Deactivated, restricted power feeding
on	blinking	Activated, restricted power feeding
off	off	Port not active

**Pin Assignment.** The connectors of the S<sub>0</sub> interface module have the following pin assignment:

**Table A-17: Pin assignment for connectors TE A and TE M**

Pin	Assignment	Pin	Assignment
1	Not connected	5	Rx-
2	Not connected	6	Tx-
3	Tx+	7	Not connected
4	Rx+	8	Not connected

**Table A-18: Pin assignment for connectors MON A B and MON M N**

Pin	Assignment	Pin	Assignment
1	Not connected	5	Rx TE-
2	Not connected	6	Rx NT-
3	Rx NT+	7	Not connected
4	Rx TE+	8	Not connected

**Table A-19: Pin assignment for connectors TE/NT B and TE/NT N**

Pin	Assignment	Pin	Assignment
1	Not connected	5	Tx-
2	Not connected	6	Rx-
3	Rx+	7	Not connected
4	Tx+	8	Not connected

### **U<sub>2B1Q</sub> Interface Module**

The U<sub>2B1Q</sub> interface module provides two connectors for line connection, which are designated as follows:

- “LT A” or “LT M” (old: “to LT”)
- “NT/LT B” or “NT/LT N” (old: “to NT(LT)”)

**Modes of Operation.** To monitor lines with the U<sub>2B1Q</sub> interface module, proceed as follows:

1. Deactivate the line concerned and separate it.
2. Connect the network to the socket labelled “LT A”/“LT M” and connect the NT to the socket labelled “NT/LT B”/“NT/LT N”. The interface module responds in the line like a U-repeater.

**Line status.** Two LEDs, “L1” (Layer 1 activated) and “PF” (Power Feeding), are assigned to each line connector. The LEDs indicate the line status, as shown in the following table.

**Table A-20: Line status U<sub>2B1Q</sub> interface module**

<b>L1</b>	<b>PF</b>	<b>Meaning</b>
on	on	After booting: Reset of the interface. Else: Activated, normal power feeding
alternating with PF	alternating with L1	Port is initialized and deactivated: Activate. Internal: deactivated, no power feeding
on	off	Activated, no power feeding
off	on	Deactivated, normal power feeding
off	blinking	Deactivated, restricted power feeding
on	blinking	Activated, restricted power feeding
off	off	Port not active

**Pin Assignment.** The connectors of the U<sub>2B1Q</sub> interface module have the following pin assignment:

**Table A–21: Pin assignment for connectors LT A and LT M**

Pin	Assignment	Pin	Assignment
1	TIP*	2	RING*

**Table A–22: Pin assignment for connectors NT/LT B and NT/LT N**

Pin	Assignment	Pin	Assignment
1	TIP*	2	RING*

\* Either polarity is possible.

### Auxiliary Connections

The modules also provide the following auxiliary connections:

- Headphones: A 3.5-mm stereo jack is used as headphone connector. Software has not been implemented yet but is coming soon: a B channel can be monitored bidirectionally via the stereo headphones.

---

**NOTE.** *Use a headphone with a ferrit part in order to fulfill EMC regulations.*

---

- B channel connection “64k EXT”: The B channels can be accessed externally with the appropriate setting in the configuration menu (also see below *B Channel Access Adapter*).
- Supply module, auxiliary connection “EXT”, red and black, for supply voltage: Two 4-mm banana jacks are provided for measuring the supply voltage (red: normal + and black: normal –) supplied by the NT (with S<sub>0</sub>) or the LT (with U<sub>2B1Q</sub>) when monitoring.

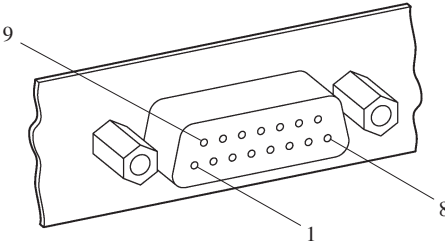


---

**CAUTION.** *Due to EMC reasons, use only high quality, shielded cables!*

---

**B Channel Access Adapter.** B channel data is extracted using an optional accessories adapter cable, which features two connectors: a 10-pin mini plug for the interface module (“64k EXT”) on one end and a female 15-pin D-Sub plug on the other end with the following pin assignment.



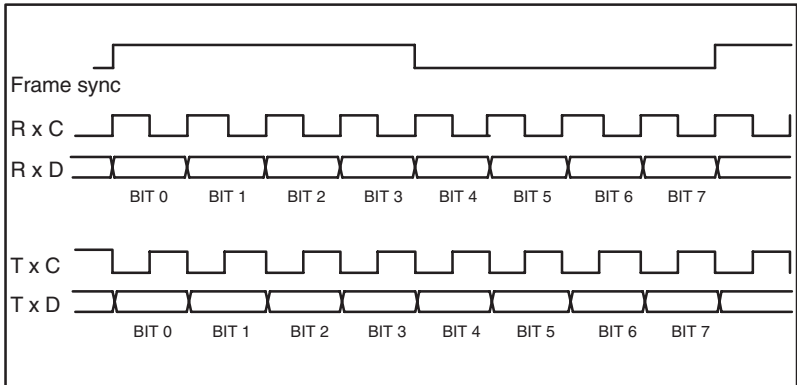
**Figure A-3: B channel connection**

**Table A-23: Pin assignment for B channel connection**

Pin	Assignment	Pin	Assignment
1	Output RxD/B1 from network-side when monitoring	9	Output RxD/B2 from user-side when monitoring
2	Not connected	10	Output RxD/B2 from network-side when monitoring
3	Output RxD/B1 from user-side when monitoring	11	Not connected
4	Input TxD/B2	12	Input TxD/B1
5	Not connected	13	Output TxC (64 kHz inverted to RxC)
6	Output RxC (64 kHz)	14	Not connected
7	Output frame signal B1 (8kHz)	15	Digital Ground
8	Output frame signal B2 (8kHz)		



The signals are TTL level with an impedance of 75  $\Omega$ .



**Figure A-4: Time diagrams**

## V./X. Board

The V./X. interface module contains two socket connectors per V./X. interface for line connection, which are designated as follows:

- “to DCE”
- “to DTE”

The interface standards V.24, X.21 and V.35 are supported.

The connection to the various interfaces is made with a special adapter cable. Since the V./X. board can be used in K1297-G20 applications it is shipped with monitoring and simulation cables. Be sure to use only the monitoring cables for V.35, X.21 and X.24 (see figures in the appropriate sections).

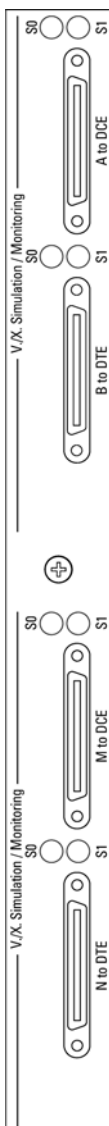


Figure A-5: V/X. board

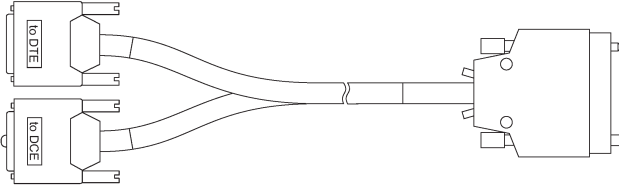
Each terminal socket is equipped with two LEDs for displaying the line status. Each of the line connectors labelled “to DTE” and “to DCE” are assigned two LEDs. These display the line status as shown in the following table.

**Table A–24: Line status: V./X. interface module**

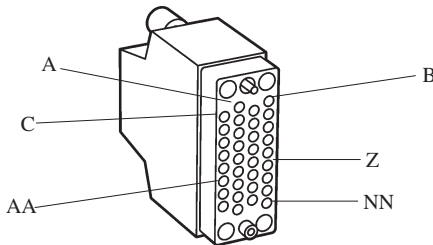
S0	S1	Meaning
on	on	While booting: Reset of the interface
off	off	After booting: Port not in operation
alternating with S1	alternating with S0	Port initialized. No adapter cable connected (operational state)
on	off	Port initialized. Adapter cable connected (operational state)
on	on	Port initialized. Data traffic is possible (operational state): <ul style="list-style-type: none"> <li><b>Case 1:</b> <ul style="list-style-type: none"> <li>– with V.35 or V.24 cable to DTE</li> <li>– receiver ready</li> <li>– line status Data Terminal Ready has been reached</li> </ul> </li> <li><b>Case 2:</b> <ul style="list-style-type: none"> <li>– with V.35 or V.24 cable to DCE</li> <li>– and receiver ready</li> <li>– line status Data Set Ready has been reached</li> </ul> </li> <li><b>Case 3:</b> <ul style="list-style-type: none"> <li>– with X.21 cable to DTE</li> <li>– and receiver ready</li> <li>– if line status Control has been reached</li> </ul> </li> <li><b>Case 4:</b> <ul style="list-style-type: none"> <li>– with X.21 cable to DCE</li> <li>– receiver ready</li> <li>– if line status Indication has been reached</li> </ul> </li> </ul>

## Adapter Cables and Adapter Cable Interfaces

### V.35 Monitor Adapter Cable.



### V.35 Monitor Adapter Cable Interface.



**Table A-25: V.35 Monitor**

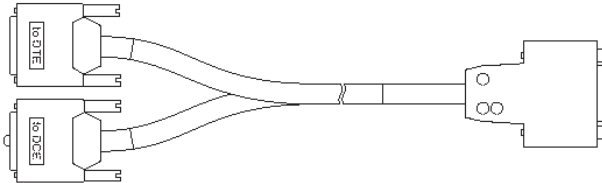
Pin	Assignment	Pin	Assignment
A	101 Cable shield (connected with the connector housing)	V	115 Rx Clk A (IN) —X
B	102 Signal ground	W	113 Tx ext clk B (IN)
C	105 RTS (IN)	X	115 Rx Clk B (IN)
D	106 CTS (IN)	Y	114 Tx Clk A (IN) —AA
E	107 DSR (IN)	Z	Not connected

**Table A-25: V.35 Monitor (Cont.)**

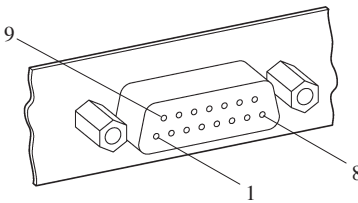
<b>Pin</b>	<b>Assignment</b>	<b>Pin</b>	<b>Assignment</b>
F	109 carrier detect (IN)	AA	114 Tx Clk B (IN)
H	108 DTR (IN)	BB	Not connected
J	125 ring detect (IN)	CC	Not connected
K	Not connected	DD	Not connected
L	Not connected	EE	Not connected
M	Not connected	FF	Not connected
N	Not connected	HH	Not connected
P	103 send data A (IN) —S	JJ	Not connected
R	104 Rx data A (IN) —T	KK	Not connected
S	103 send data B (IN)	LL	Not connected
T	104 Rx data B (IN)	MM	Not connected
U	113 tx ext clk A (IN) —W	NN	Not connected

—n                      Reference to a symmetrical pair

### X.21 Monitor Adapter Cable



### X.21 Monitor Adapter Cable Interface



**Table A-26: X.21 Monitor**

Pin	Assignment	Pin	Assignment
1	Cable shield (connected with the connector housing)	9	B lead (IN)
2	T Tx data A (IN) —9	10	B lead (IN)
3	C Control A (IN) —10	11	B lead (IN)
4	R Rx data A (IN) —11	12	B lead (IN)
5	I indic. A (IN) —12	13	B lead (IN)

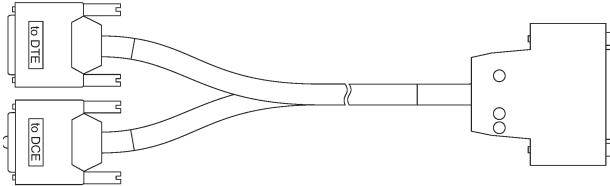
**Table A-26: X.21 Monitor (Cont.)**

<b>Pin</b>	<b>Assignment</b>	<b>Pin</b>	<b>Assignment</b>
6	S tx clk A (IN) —13	14	Not connected
7	Not connected	15	Not connected
8	G-Signal ground		

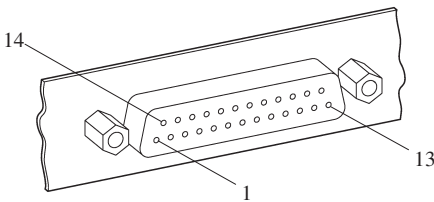
—n                      Reference to a symmetrical pair



### V.24 Monitor Adapter Cable



### V.24 Monitor Adapter Cable Interface



**Table A-27: V.24 Monitor**

Pin	Assignment	Pin	Assignment
1	Cable shield (connected with the connector housing)	14	Not connected
2	103 send data (IN)	15	114 send data clk (IN)
3	104 receive data (IN)	16	Not connected
4	105 request to send (IN)	17	115 rec data clk (IN)
5	106 clear to send (IN)	18	141 local loopback (IN)
6	107 data set ready (IN)	19	Not connected
7	102 signal ground	20	108 data term ready (IN)
8	109 carrier detect (IN)	21	110 signal quality detect (IN)

**Table A-27: V.24 Monitor (Cont.)**

<b>Pin</b>	<b>Assignment</b>	<b>Pin</b>	<b>Assignment</b>
9	Not connected	22	125 ring indicate (IN)
10	Not connected	23	111 clk select (IN)
11	116 select DCE STDBY (IN)	24	113 ext. clock (IN)
12	Not connected	25	142 test indicator (IN)
13	Not connected		

## E1/DS1 Monitoring Board

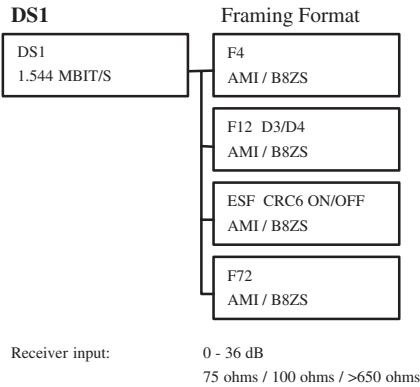
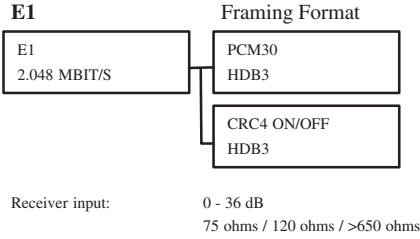
Each E1/DS1 monitoring board (PRIMO: primary rate monitoring) has four independent PCM monitor interfaces and can receive eight signalling links with HDLC data. The Protocol Tester can be extended to simultaneously monitor 16 PCM interfaces and 32 signalling links.

---

**NOTE.** *EN 60950, IEC 950, UL 1950: The interface boards are designed for connecting to a telecommunication network (TNV-1 circuits); the appropriate interfaces are provided.*

---

The following overview shows the supported framing formats and the electrical specifications:



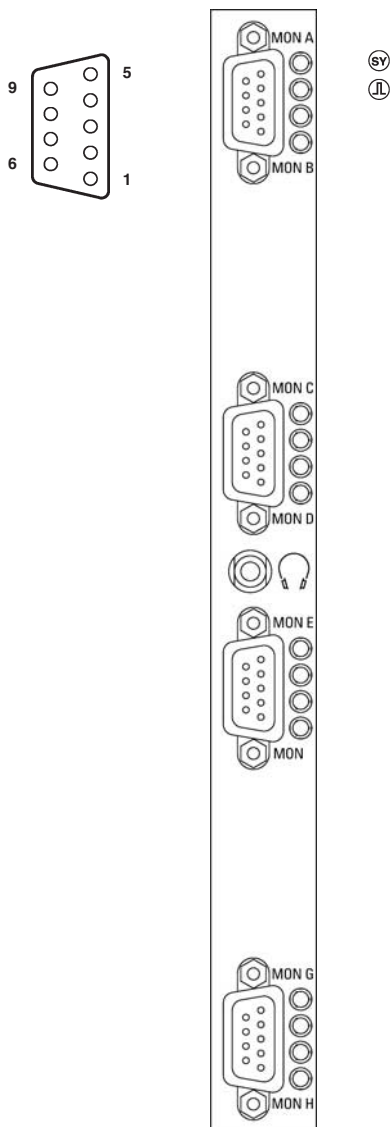


Figure A-6: E1/DS1 monitoring board (PRIMO)

9-pin D-Sub connectors are available as interfaces.

**Table A-28: Pin assignment D-Sub connectors**

Pin	Assignment	Pin	Assignment
1	RX- MON A, C, E, G	6	RX+ MON A, C, E, G
2	Not connected	7	Not connected
3	Not connected	8	Not connected
4	Not connected	9	RX+ MON B, D, F, H
5	RX- MON B, D, F, H		



In addition a headphone connector with a mini jack is provided for listening to audio data.

---

**NOTE.** Use a headphone with a ferrit part in order to fulfill EMC regulations.

---

The status LEDs on the front panel have the following meaning:

-  Synchronous: Receive frame recognized, if LED is on.
-  Signal ok: Receive signal recognized, if LED is on.
- Blinking LED** Port is configured for data receiving, but no valid signal is received
- Off** Port has not yet been configured
- On** Board is beeing booted (after reset) or port is configured and valid signal is received.

## Ethernet Board

The set of Ethernet boards is equipped with two Ethernet single-wide PCI mezzanine modules for special applications such as GPRS and IP.

The Ethernet modules comply with the IEEE 802.3 for 10 BaseT and 100 BaseTx. Both full duplex and half duplex modes are supported.

---

**NOTE.** *EN 60950, IEC 950, UL 1950: The interface boards are designed for connecting to a telecommunication network (TNV-1 circuits); the appropriate interfaces are provided.*

---

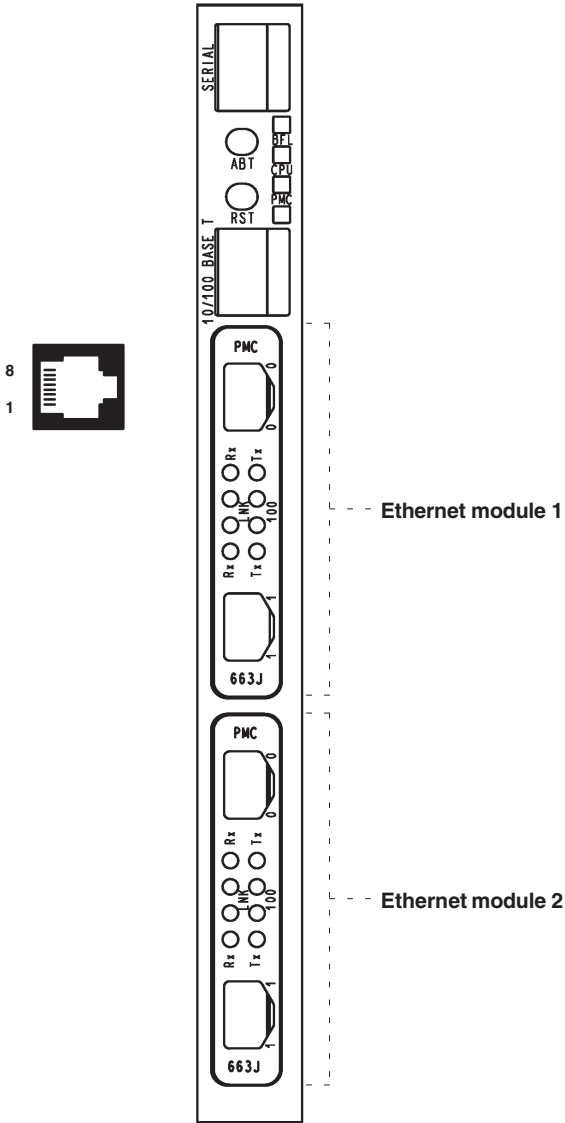
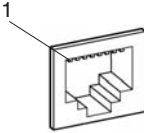


Figure A-7: ETH board with two Ethernet PCI mezzanine modules



The SERIAL interface (RJ45 connector) can be used as asynchronous serial debug port for service purposes.



**Table A-29: Pin assignment for the SERIAL interface (DTE)**

Pin	Assignment	Pin	Assignment
1	DCD	5	RxD
2	RTS	6	Ground
3	Ground	7	CTS
4	TxD	8	DTR

In addition an RJ45 10-BaseT/100-BaseT connector is provided on the front panel (for future use, not yet supported).

**Table A-30: Pin assignment for the 10-BaseT/100-BaseT interface**

Pin	Assignment	Pin	Assignment
1	TX +	5	Not connected
2	TX -	6	RX -
3	RX +	7	Not connected
4	Not connected	8	Not connected

The two switches on the front panel have the following function:

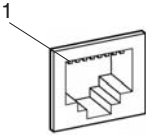
ABT	Abort (for future use, not yet software supported)
RST	Reset all onboard devices

The four status LEDs on the front panel have the following meaning:

BFL	Board failure
CPU	CPU is accessing the bus
PMC	Top PCI mezzanine card, if installed, is active
PMC	Bottom PCI mezzanine card, if installed, is active

## Ethernet Modules

Two independent high performance Fast Ethernet interface controller ports (RJ45 connectors) are on an Ethernet module.



**Table A-31: Front Panel I/O Pin Assignment**

Pin	Signal	Pin	Signal
1	TX +	5	Not connected
2	TX -	6	RX -
3	RX +	7	Not connected
4	Not connected	8	Not connected

Each Ethernet port provides a set of four LED status indicators on the front panel with the following information:

Rx                      Traffic is sensed on the network.  
Tx                      A data packet is sent.

The LEDs have the following meaning:

LINK                    Link integrity: LED is on means, link is good in either 10 or 100 Mbps mode.  
                             LED is off means, link is bad.

100                     Speed: LED is on means, the data rate is 100 Mbps.  
                             LED is off means, the data rate is at 10 Mbps.  
                             LED retains its last known state when the link is down.

### Defining CPU Numbers

The following section describes how to define CPU numbers (VME bus addresses) if you work with a second Ethernet board consisting of a Power-PC board plus hooked up mezzanines. Only an experienced service technician should perform this setting procedure.



---

**CAUTION.** *The following steps must be performed at an ESD approved workplace. Electrostatic discharge can permanently destroy components that have to be temporarily removed from your device.*

---

In order to operate several Ethernet boards within one device, the default CPU numbers of the second (third, fourth) board have to be changed.

1. Check that the address is set correctly for each board. Typical addresses are as follows:

**Table A-32: Ethernet boards: address settings**

Board	Address
1st Ethernet board	07 (with 08 implicitly); no changing necessary
2nd Ethernet board	05 (with 06 implicitly)
3rd Ethernet board	03 (with 04 implicitly)

---

**NOTE.** *Only select odd numbers when changing the address for an additional Ethernet board, and follow the recommended settings as listed in the table above.*

---

The CPU numbers being stored within NVRAM of the Ethernet board are an integral part of the CPU's bootline. You can modify this bootline as described in the following.

2. To check the used CPU numbers, open the K1297-G20 Monitor Status Window via the appropriate button in the toolbar.

Write down the CPU numbers displayed in square brackets in order to identify which numbers are free for addressing.

Not all displayed and existing CPU numbers are free for defining new CPU numbers. Additional restrictions are listed in the Caution statement below.

CPU #7 is the currently installed Ethernet board.

3. Now you can change the default CPU number for example to #3 by entering the following command via *Start: Run*:

```
ntterm 7
```

This command will open a window that gives you basic access to the VxWorks operating system. Enter the command `bootChange` and press the return key until you see:

```
processor number : 7
```

Enter 3 on the same line and press the return key until the prompt (`->`) reappears.

```
->
```



**CAUTION.** *Due to hardware restrictions it is not possible to use odd numbers on a ETH-100 board if the number + 1 is used in the system. In other words, do not use #7 if there is a #8 CPU in the system.*

*The same applies to the PC-Board CPU, which is CPU #9; #10 cannot be used for any board!*

*Example:*

*If there is no board with #3 or #4, you can use #3 or #4 for ETH-100.*

---

Now you have changed the default CPU number. Therefore #7 and #8 are no longer in use and you may insert your new ETH-100 board, which will now become the new CPU #7.



## Appendix B: Keyboard

After the device is switched on, the keyboard LEDs light up twice; the keyboard is now ready for operation.

All keys are repeat-action keys; the character repeats automatically if you hold down the key.

The keyboard features several key groups and key rows with the following:

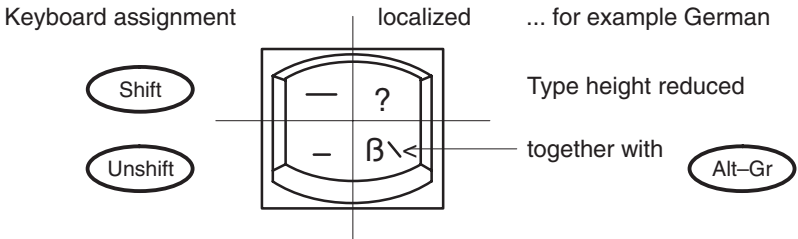
- Alphanumeric keys
- Function keys
- Cursor keys
- Integrated numeric keypad (with the K1297 Protocol Tester the numeric keys are part of the alphanumeric keypad)

The different key groups are described in detail on the following pages. Further information on language support, the trackball and how to connect an external mouse are also provided.

### Alphanumeric Keypad

The largest keypad is the alphanumeric keypad with keys for letters, numbers and special characters. The character arrangement mainly corresponds to a normal typewriter keyboard. In addition there are some keys that have certain special functions.

The keyboard is international and labeled in localized form.



The functions of the special keys in the alphanumeric keypad are described in Table B-1.



The special keys in the alphanumeric keypad have the following functions:

**Table B-1: Special keys**

<b>Key</b>	<b>Function</b>
<- ->	The tabulators move the cursor to the left or right according to the tabulator positions.
CAPS LOCK	If the caps lock key is pressed, an LED display lights up. Capital letters are used; all other characters remain normal. If you want to enter lowercase letters, you must press the SHIFT key.
CTRL	This control key is used only in combination with other keys; CTRL+ALT+DEL for example restarts the operating system. The online help describes situations in which CTRL is used.
Fn	This key activates the special function of a multi-labelled key. The special function, for example Num, is printed in rimmed form on the key.
ALT	This key is used only in combination with other keys: for example, you can enter the hex value of an ASCII character (as well as additional special characters) in combination with the numeric keypad.
ALT-GR	This key is used only in combination with other keys to generate further key codes.
<-	The backspace key moves the cursor by one position to the left and deletes the character.
<-/ /	The RETURN or ENTER key is mainly used to end a command line. This means the command entered is carried out after pressing this key.
PRINT	This key is used to print the current screen on a connected printer.

**Table B-1: Special keys (Cont.)**

Key	Function
PAUSE	This key holds up the program session in most of the applications.
NUM	K1297 benchtop device: The numeric keypad switches from cursor control to numeric keys via this key; an LED lights up. Pressing the key again clears this function.

### Function Keys

Twelve programmable function keys are arranged in the top row of the keyboard. The assignment of these keys depends on the software.

The key combination *CTRL+ALT+DEL* does not automatically reboot the PC. Instead a secure attention sequence (SAS) occurs which allows you to logoff, reboot, change the password, start the task manager, or lock the PC.

The following overview shows possible key combinations:

**Table B-2: Function keys and key combinations**

Keys	Function
CTRL+ALT+DEL	This key combination triggers a warm start.
Fn+<Tilde key>	This key combination switches the trackball on or off.

### Cursor Keys

The following cursor keys are available:

**Table B-3: Cursor keys**

Key	Function
HOME	This key moves the cursor to the beginning.
PAGE	This key scrolls backwards and forwards.
END	This key moves the cursor to the end.
<Arrow keys>	These keys moves the cursor: up, down, left, right.

### Numeric Keypad, Numeric Keys

To switch on the integrated numeric keys, press *Fn+Num*. Press any other key, to clear this function.

### Language Support

The device is pre-configured with two selectable keyboard layouts:

- EN English (United States), Layout: US
- DE German (Standard), Layout: German, IBM

In the corner opposite of the *Start* button of the taskbar you either see *EN* or *DE* for the active keyboard layout.

The German IBM layout is different from the usual German PC keyboard layout. The *<CAPS-LOCK>* key only shifts the alphabetic character keys and no decimal digits or punctuation characters.

You can temporarily change the keyboard layout by pressing *<ALT>+<LEFT-SHIFT>*. To change the keyboard layout permanently, proceed as follows:

1. Click on *Start: Settings*.
2. Click on *Control Panel*.
3. Double-click on *Keyboard*.
4. Click on the tab *Input Locales*.
5. Select from the list and press *Set as Default*.

### **Trackball**

The trackball is used to control the cursor and the menu. The cursor can be moved to any position on the screen by moving the trackball.

Characters or words are highlighted by pressing the left trackball key. The assignment of the right trackball key depends on the user program. Using the trackball, you can select objects, edit menus and trigger functions.

The trackball is covered by a housing that usually protects the ball and the transmission mechanism from dust. However, the ball should be cleaned at regular intervals. Proceed as follows:

1. Remove the cover from the ball housing by turning it counter-clockwise. You can use a pair of tweezers, for example, which you put into the holes on the ring. Then you can take the ball out of the housing.
2. Clean the ball with tap water and a mild detergent. Blow the remaining dust out of the ball housing and put the ball back in.
3. Then put the cover back on and tighten it.

### Switching the Trackball Off or On (PC-3 Board only)



---

**CAUTION.** In the following you find descriptions on how to change certain parameters of the PC BIOS of the Protocol Tester if you are using a PC-3 board). Follow the instructions and do not change other parameters in the PC BIOS as the device might become unusable or the performance might degrade. If you have opened a menu that is not described here, press the <ESC> key immediately in order to leave the menu.

---

If you want to switch off the trackball so that only the external mouse is functional, you must change the PC BIOS.

Change the PC BIOS as follows (the procedure can also be used to switch the trackball on again):

1. Switch on the device. A blue framed screen appears with a title that starts with:

*Power Bios*

2. Press <CTRL>+<ALT>+<ESC> as fast as possible.

A window appears titled *Award Software International, Inc. Power BIOS 1.00 Setup*

3. Now use the <CURSOR DOWN> key in order to move to the menu item called *Peripherals*

4. Press the <ENTER> Key. Press the <TAB> key until the value for the *PS/2 Mouse* item is highlighted.

5. Use the <CURSOR-DOWN> key to change to select the appropriate value:

*Enabled*

*Disabled*

6. Press <ENTER>, <ESC> and <ENTER> to save the change. The device will restart.

### Connecting an External Mouse

If you want to connect an external mouse (serial mouse) and use it instead of the built-in trackball, proceed as follows:

1. Shut down and switch off the device.
2. Connect the external mouse to the COM1 interface.
3. Switch on the device.

The system restarts.

**PC-3 board only:** During this restart you can switch off the trackball, proceed as described in the section *Switching the Trackball Off or ON*.

---

**NOTE.** *Do not change the mouse driver via the Control Panel applet. This could make the keyboard unusable.*

---

### Deactivating an External Mouse

If you connected an external mouse and you want to use the trackball again, proceed as follows:

1. Shut down and switch off the device.
2. Disconnect the mouse from the serial port.
3. **PC-3 board only:** Switch the device on and make sure that the trackball is enabled in the PC BIOS as described above (section *Switching the Trackball Off or On*). If you forget this step, there will be no pointing device at the next start of Windows XP; press `<CTRL>+<ALT>+<Delete>` on the keyboard and select *Shut Down* to repeat the cycle.
4. Restart the device.



---

### Switching the Trackball Off or On (PC-3 Board only)



---

**CAUTION.** In the following you find descriptions on how to change certain parameters of the PC BIOS of the Protocol Tester if you are using a PC-3 board). Follow the instructions and do not change other parameters in the PC BIOS as the device might become unusable or the performance might degrade. If you have opened a menu that is not described here, press the <ESC> key immediately in order to leave the menu.

---

If you want to switch off the trackball so that only the external mouse is functional, you must change the PC BIOS.

Change the PC BIOS as follows (the procedure can also be used to switch the trackball on again):

1. Switch on the device. A blue framed screen appears with a title that starts with:

*Power Bios*

2. Press <CTRL>+<ALT>+<ESC> as fast as possible.

A window appears titled *Award Software International, Inc. Power BIOS 1.00 Setup*

3. Now use the <CURSOR DOWN> key in order to move to the menu item called *Peripherals*
4. Press the <ENTER> Key. Press the <TAB> key until the value for the *PS/2 Mouse* item is highlighted.
5. Use the <CURSOR-DOWN> key to change to select the appropriate value:

*Enabled*

*Disabled*

6. Press <ENTER>, <ESC> and <ENTER> to save the change. The device will restart.



# Appendix C: Specifications

The K1297/K1297 CompactProtocol Tester is a portable protocol analyzer with integrated TFT color display and keyboard.

The K1297 Protocol Tester consists of an AT compatible PC system and a VME bus system in a single housing. Various measurement interface modules can be plugged to the VME bus system.

**Table C-1: Environmental conditions**

Temperature range	Operating: 5°C to 40°C Non-operating: -20°C to +55°C
Relative humidity	Operating: up to 80 % below 30°C, derate to 45 % at 40°C, non-condensing  Non-operating: up to 90 % below 30°C, derate to 60 % at 20°C, non-condensing
Altitude	Operating: 0 to 3000 m Non-operating: 0 to 12 000 m

**Table C-2: Power supply**

Line adapter	Safety class 1, (protective grounding)
Line voltage	Rated range of use 100 .. 240 V, $\pm$ 10%, automatic changeover
Line frequency	Rated range of use 50/60 Hz, -6% to +5%
Power consumption	<b>K1297:</b> Maximum value 650 VA <b>K1297 Compact:</b> Maximum value 460 VA

**Table C-3: K1297. Overall dimensions and weight**

Width	400 mm
Height	321 mm
Depth	275 mm
Weight	Approximately 14 to 18 kg (depending on configuration level)

**Table C-4: K1297 Compact. Overall dimensions and weight**

Width	288 mm (without handle)
Height	344 mm (without handle)
Depth	190 mm (without handle)
Weight	8 to 10 kg (depending on equipment)

**Table C-5: Hardware**

Central computer	Intel Pentium CPU $\geq$ 133 MHz $\geq$ 64 MB RAM
Connections	2 x serial 1 x parallel (Centronics) Keyboard SCSI VGA (external monitor)  With Pentium Processor PC card: Ethernet (10Base-2, 10Base-T) or  With Celeron Processor PC card: Ethernet (10BaseT), USB
Display	TFT (Thin Film Transistor) External screen interface
Mass memory	SCSI hard disk drive ( $\geq$ 1 GByte formatted total capacity, access time < 11ms or better) 3.5" floppy disk drive (1.44 MB formatted overall capacity) External CD-RW drive (option)
Keyboard	PS/2 compatible keyboard, Trackball

**Table C-6: Interface boards**

VME-bus backplane	Layers with automatic daisy chain and 5 VME slots: slot 1, system computer; slots 3, 4, 5, interface modules
Interface modules (except Ethernet)	CPU 68EC040 (25 MHz) with up to 32 MByte RAM  With E1/DS1: 4 additional RISC processors 68360 (QUICC) for I/O tasks
Application Processor AP-4	Power PC 750, 350 MHz, 1 MB L 2 Cache, 64 MB RAM with the following connectors: 1 x RJ45 Serial 1 x RJ45 10-BaseT/100-BaseTx Ethernet
Application Processor AP-4/256	Power PC 750, 350 MHz, 1 MB L 2 Cache, 256 MB RAM with the following connectors: 1 x RJ45 Serial 1 x RJ45 10-BaseT/100-BaseTx Ethernet
BAI	Interface module for performing measurements on ISDN S <sub>0</sub> and U <sub>2B1Q</sub> lines with the following connectors: 2 x monitoring (duplex)
E1/DS1 (PRIMO)	Interface module for performing measurements on PCM-24 and PCM-30 lines with the following connectors: quadruple monitoring (duplex)
V./X.	Interface module for performing measurements on V.24, X.21 or V.35 lines with the following connectors: 2 x monitoring (duplex)

**Table C-6: Interface boards (Cont.)**

Ethernet	The Ethernet modules comply with the IEEE 802.3 for 10BaseT and 100BaseTx: ≥ 64 MB RAM 2 x emulation / simulation 2 x monitoring (duplex) or 4 x monitoring (half-duplex)
----------	---

**Table C-7: Certifications and compliances**

<b>Category</b>	<b>Standards or description</b>
<p>EC Declaration of Conformity – EMC*</p>	<p>Meets intent of Directive 89/336/EEC for Electromagnetic Compatibility. Compliance was demonstrated to the following specifications as listed in the Official Journal of the European Communities:</p> <p>EN 61326                      EMC requirements for Class A electrical equipment for measurement, control and laboratory use.</p> <p>IEC 61000-4-2              Electrostatic discharge immunity (Performance Criterion B)</p> <p>IEC 61000-4-3              RF electromagnetic field immunity (Performance Criterion A)</p> <p>IEC 61000-4-4              Electrical fast transient / burst immunity (Performance Criterion B)</p> <p>IEC 61000-4-5              Power line surge immunity (Performance Criterion B)</p> <p>IEC 61000-4-6              Conducted RF immunity (Performance Criterion A)</p> <p>IEC 61000-4-11            Voltage dips and interruptions immunity (Performance Criterion B)</p> <p>EN 61000-3-2              AC power line harmonic emissions</p> <p>EN 61000-3-3              Flicker</p>
<p>Australia / New Zealand Declaration of Conformity – EMC</p>	<p>Complies with EMC provision of Radiocommunications Act per the following standard(s):</p> <p>AS/NZS 2064.1/2            Industrial, Scientific, and Medical Equipment: 1992</p>
<p>EC Declaration of Conformity – Low Voltage</p>	<p>Compliance was demonstrated to the following specification as listed in the Official Journal of the European Communities:</p> <p>Low Voltage Directive 73/23/EEC as amended by 93/68/EEC</p> <p>EN 61010-1/A2: 1995      Safety requirements for electrical equipment for measurement, control, and laboratory use</p>



**Table C-7: Certifications and compliances (Cont.)**

<b>Category</b>	<b>Standards or description</b>
U.S. Nationally Recognized Testing Laboratory Listing	Only for devices with UL symbol on the back of the housing:  UL 3111-1: Standard for electrical measuring and test equipment
Canadian Certification	Only for devices with UL symbol on the back of the housing:  CAN/CSA C22.2 No. 1010.1: Safety requirements for electrical equipment for measurement, control and laboratory use
Installation (Over-voltage) Category	Overvoltage Category II (as defined in IEC 61010-1, Annex J)  Local-level mains (wall sockets). Equipment at this level includes appliances, portable tools, and similar products. Equipment is usually cord-connected.
Pollution Degree	Pollution Degree 2 (as defined in IEC 61010-1). Note: Rated for indoor use only.  Normally only dry, nonconductive pollution occurs. Occasionally a temporary conductivity that is caused by condensation must be expected. This location is a typical office/home environment. Temporary condensation occurs only when the product is out of service.
Equipment Type	Test and measuring
Safety Class	Class 1 (as defined in IEC 61010-1, Annex H) – grounded product
Laser Compliance	All lasers used in this product are in compliance with the applicable requirements of the following, and are Class I according to each: EN60825-1 IEC60825-1 U.S. CDRH Regulations



---

**CAUTION.** *To reduce the risk of fire, use only No. 26 AWG or larger telecommunications line cords for the K1297 Protocol Tester. Use only the telecommunication line cords designed and specified for the K1297.*

---

**EMC Compliance was achieved under the following conditions:** Shielded cables on all external I/O ports; front panel screws properly tightened; conductive chassis rails of the boards connected to chassis ground; cable shields connected to chassis ground via metal shell connectors bonded to a conductive module front panel; all peripherals conformed.

For minimum RF emissions, it is essential that the conditions above be implemented. Failure to do so could compromise the EMC compliance of the equipment containing the board.

Ferrite sleeves on all headphone or headset cables. The ferrite sleeve with hinged plastic housing is included in the accessory box, in a plastic bag. It has to be mounted on the cable near the termination that is connected to the headphone interface. The cable has to be turned twice around the ferrite before closing the ferrite.



---

**WARNING.** *EN 55022: This is a class A product. In a domestic environment, this product may cause radio interference in which case the user may be required to take adequate measures.*

---



# Appendix D: Windows XPe Troubleshooting

## Preventive Measures

This Appendix describes how you can protect yourself against unexpected system failures and how you can deal with them.

The best preventive measure you can take is having a current backup. We recommend to backup your system on a regular basis as follows:

- Perform regular system backups for your Windows XPe configuration using the System Restore tool.
- Perform regular system backups for your K1297-G20 user data using the Backup tool.

### **System Restore**

System Restore is a component of Windows XPe that you can use to restore your operating system to a previous state, if a problem occurs, without losing your personal user data.

---

**NOTE.** *System Restore is installed and activated at the factory. It needs at least 200 MB of disk space available to work properly.*

---

System Restore monitors changes to the system and automatically creates easily identified restore points. Restore points are stored states of your operating system that allow you to revert the system to a previous time.

Create restore points each time you make significant changes to your operating system, e.g. before and after installations of new or different device drivers or before and after software installations.

**Creating Restore Points.** Follow these steps to create restore points:

1. Exit all applications.
2. Select *Start / All Programs / Accessories / System Tools / System Restore*.  
The *System Restore Wizard* opens. Follow the instructions in the wizard.
3. Click *Create a restore point*, and then click **Next**.
4. In the *Restore point description* box, type a name to identify this restore point. System Restore automatically adds to this name the date and time that this restore point is created.
  - To finish creating this restore point, click **Create**.
  - To cancel restore point creation and return to the Welcome to System Restore screen, click **Back**.
  - To cancel restore point creation and exit the *System Restore Wizard*, click **Cancel**.

If you do not like the state of your computer after you restore it, you can undo the restoration or select another restore point. All successful restorations are reversible. All failed restorations are automatically reversed by System Restore.

---

**NOTE.** *The possible number of restore points depends on the available space on the partition where your operating system folder is located. If you do not have sufficient space available, System Restore is not activated.*

---

**Restore the K1297-G20 by Restore Points.** Follow the following steps to restore states of your operating system by restore points:

1. Exit all applications.
2. Access the *System Restore Wizard* via *Start / All Programs / Accessories / System Tools / System Restore*. Click *Restore my computer to an earlier time*, and then click **Next**.
3. Select the date when the restore point was created from the calendar in the *Select a Restore Point* dialog box. All of the restore points that were created on the selected date are listed by name in the list box to the right of the calendar. Click **Next**.
4. Confirm your selection in the *Confirm Restore Point Selection* dialog box and click **Next**.

System Restore shuts down Windows and restores your K1297-G20 to the selected date and time.

After the restoration Windows restarts using the settings from the date and time listed above.

## Backup Tool

Windows XPe includes Backup, a tool that backs up and restores your K1297-G20 user data.

We recommend to backup your K1297-G20 user data each time you make significant changes to your K1297-G20 software.

**Backup the K1297-G20 User Data.** To backup your K1297-G20 user data, proceed as follows:

1. Exit all applications.
2. Select *Start / All Programs / Accessories / System Tools / Backup*. The *Backup or Restore Wizard* opens.
3. Click **Next** to start configuring the backup process.
4. In the second wizard window (*Backup or Restore*), select *Backup Files and Settings* and click **Next**.
5. In the following wizard windows, select which folder, files and items you want to backup as well as type, destination, and name of the backup process.

Follow the wizard instructions to define these settings.

6. At the end of the configuration, the backup process starts automatically. The *Backup Progress* dialog box opens and displays all information about this process.

**Restore the K1297-G20 User Data.** To restore your K1297-G20 user data, proceed as follows:

1. Exit all applications.
2. Select *Start / All Programs / Accessories / System Tools / Backup*. The *Backup or Restore Wizard* opens.
3. Click **Next** to start configuring the restore process.
4. In the second wizard window (*Backup or Restore*) select *Restore Files and Settings* and click **Next**.
5. In the following wizard windows, select which folder, files and items you want to restore as well as type, destination, and name of the restored process.

Follow the wizard instructions to define these settings.

6. The last wizard window (*Completing the Backup or Restore Wizard*) lists all restore settings you have created.

Specify additional restore options by clicking the *Advanced* button or close the wizard and start the restore process by clicking the *Finish* button.

The *Restore Progress* dialog box opens and displays all information about this the restore process.



## Repair Measures

The following pages describe how to repair or reinstall a damaged Windows XPe installation on the K1297.

---

**NOTE.** For general troubleshooting tips read the Windows online help. To open the online help, click Start: Help and Support on the taskbar.

---

Under rare circumstances, the K1297 may not start (boot). These circumstances include:

1. Installation of faulty third-party drivers
2. Erroneous changes in the Registry
3. Deleting or replacing system files by mistake

In these circumstances the Windows XPe boot process might crash with error messages, dark or blue screen.

Another problem occurs when the passwords of all accounts have been changed and have been forgotten. In this case the device starts, but does not log on automatically and no one can log on manually.

In all these instances, switch off your device and try to restart it. If Windows does not start again, carry out the Windows XPe installation repair process.

To carry out the repair process restart the K1297 by the delivered K12 Recovery-CD as described on the following pages.

### **Recovery Disk**

New devices always contain a K12 Recovery CD.

Using this CD you can reproduce the user accounts and the driver configuration that existed when the device was produced. The reproduction of the user accounts is necessary if the passwords have been lost (after being changed).

This CD can be used to restart the device in case of a major hardware or software failure. It contains the state of the device at the time of production without K1297-G20 software.

---

**NOTE.** *Store this backup software in a safe location where you can easily retrieve the software for maintenance purposes.*

---

**Repair the K1297 by Recovery Disk.** To repair the K1297 by the recovery disk, proceed as follows:



---

**CAUTION.** *Make sure that the protocol tester and the external CD-RW drive are both powered off!*

---

1. Attach the SCSI cable of the CD-RW drive to the SCSI I/O BUS connector of the instrument. The SCSI connector is located on the front of the K1297 compact and on the rear of the K1297.
2. Turn on the CD-RW drive .
3. Insert the CD ROM labeled “K1297, Recovery CD (Build XPe)” into the CD-RW drive.
4. Switch on the device. Press <Del>, when the initial BIOS screen appears. This opens the BIOS Setup dialog.
5. Use the arrow keys to select the option “BIOS FEATURES SETUP” and press <Enter>.
6. In the dialog that opens, verify the settings of the “Boot Sequence” option. If the sequence A,C,SCSI is currently not selected, change it using the <PgUp> / <PgDn> keys.
7. Press <ESC> to return to the previous dialog.
8. Press <F10> to “SAVE & EXIT SETUP”.

9. Confirm by pressing <Y> and <Enter>. The instrument boots from CD-ROM and the Recovery CD Welcome screen will appear. See Figure D-1.

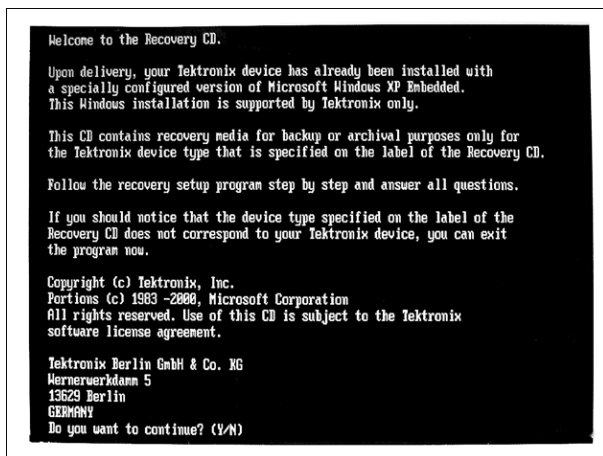


Figure D-1: Recovery CD Welcome screen

10. Continue by pressing <Y> and then <Enter>.  
The EasyRestore program starts.

11. Follow the instructions in the *EasyRestore* wizard and start the recovery process. The recovery process may take some minutes. A progress indicator displays the percentage of the process that has been completed.
12. Wait until completion and remove the Recovery CD from the CD-RW drive.
13. Press <CTRL> <ALT> <DELETE> to restart the device.
  - Windows XPe starts. The initialization phase takes some minutes.
  - An *XPe by Tektronix* dialog box opens displaying the current windows settings (computer name, domain name, and account). Confirm these settings with OK.
  - Another *XPe by Tektronix* dialog box opens. Enter the actual computer name or your device number into this dialog box and confirm your entry with OK.

Windows XPe restarts once again. The image of the Recovery CD has been restored on your K1297.

**Reinstall the K1297-G20 Software.** After the Windows XPe repair process, you must reinstall the K1297-G20 Monitor software. To reinstall the K1297-G20 Monitor software, proceed as described in the *Software Installation* chapter.



# Abbreviations

**ATM**

Asynchronous transfer mode

**ATS**

Abstract test suite

**BSC**

Base station controller

**BSS**

Base station subsystem

**BSSAP**

BSS Application part

**BTS**

Base transceiver station

**CIC**

Circuit identity code

**EIR**

Equipment identification register

**ETSI**

European telecommunications standards institute

**GMSC**

Gateway mobile service switching center

**GPRS**

General radio packet service

**GSM**

Global system for mobile communication

**HLR**

Home location register

**IMSI**

International mobile subscriber identity

**IN**

Intelligent network

**INAP**

Intelligent network application part

**IP**

Internet protocol

**ISDN**

Integrated serviced digital network

**ISO**

International standards organization

**ISUP**

ISDN User part

**ITU TS**

International telecommunication union, telecommunication standards section

**LU**

Location update

**MAP**

Mobile application part

**MOC**

Mobile originating call

**MS**

Mobile station



**MSC**

Mobile services switching center

**MSISDN**

Mobile subscriber ISDN address

**MSRN**

Mobile station roaming number

**MTC**

Mobile terminating call

**MTP**

Message transfer part (SS#7)

**O&M**

Operation and maintenance

**OMC**

Operation and maintenance center

**OSI**

Open systems interconnection

**PCM**

Pulse code modulation

**PDU**

Protocol data unit

**PLMN**

Public land mobile network

**PRIMO**

Primary rate monitoring: E1/T1 interface board

**PSTN**

Public switched telephone network

**SMS**

Short message service

**SPC**

Signalling point code

**SS#7**

Signalling system number 7, also:

Common channel signalling system number 7; ITU Q.700 series

**SSN**

Subsystem number

**SSP**

Service switching point

**SSS**

Switching subsystem

**TCAP**

Transfer capability application part

**TMSI**

Temporary mobile station identity

**TUP**

Telephone user part

**V..., X...**

CCITT Interfaces

**VLR**

Visitor location register

# Index

## A

- Accessories, 29, 35
  - Connecting accessories, 62
- Account, 55
- Addresses, Hex switch, 30
- Alarm triggering, 16
- Application, 38
- Application processor, AP-4, A-21
- Assistance, 5
- Audio data, A-50
- Auto Restart Mechanism, 3
- Autoconfiguration, 38, 65, 67
- Autologon, 56

## B

- Backup, E-1
  - K15 user data, E-5
  - Windows XPe data, E-3
- Backup tool, E-5
- BAI Board, 1, A-27
- Boards (also see Modules)
  - AP-Board, A-21
  - BAI, A-27
  - E1/DS1 (PRIMO), A-47
  - Ethernet Board, A-51
  - S0, A-29
  - U2B1Q, A-32
  - V./X., A-38
- Booting, 36

## C

- Cables, 29, 35
- Calltrace, 79
  - Tracing examples, 86
- Cards, 39
- CD-RW drive, 21
- Certifications, C-6
- COM1, A-7
- COM2, A-13
- Compliances, C-6
- Connecting, the data line, 35
- Connecting peripherals, 62
- Connectors, A-50
  - For headphones, A-50
- Contacting Tektronix, 8
- Cursor keys, B-5

## D

- Data Flow Window, 38
- Data Line, 35
  - Connecting, 35
- Default configuration, 55
- Device, 36
  - Description, 10
  - Dimension, C-2
  - Setting-up, 13
  - Switching off, 23
  - Switching on, 36
- Device cover , 14
- Documentation, A-20

## E

E1/DS1 Monitoring Board, A-47  
Environmental conditions, C-1  
Ethernet Board, A-51  
Ethernet connection, 58  
External Keyboard's Interface KBD,  
    A-6  
External mouse, B-9, B-10

## F

Fields of Application, 3  
Floppy disk drive, 14  
Frame View, 71  
Freeze Mode, 70  
Front cover, 16  
Function keys, B-4  
Fuses, iv, 12, 17

## H

Help, Online, 41  
Hex switch, 30  
High voltages, A-27

## I

Impedance, 35  
Installation, Installing additional  
    hardware, 62  
Installing, Modules, 30  
Interface boards (also see Boards and  
    Modules), 26  
Interfaces, 15  
    Alarm and synchronizing, A-15  
    B channel, A-36  
    Control of, 35  
    Ethernet BNC, A-10  
    Ethernet twisted pair, A-11  
    External monitor, A-12  
    K1297 keyboard, A-5  
    Parallel, A-8  
    USB, A-14  
    PCM, 1  
    SCSI, A-17  
    Serial, A-13  
Internet operation, 57  
Intranet operation, 57  
ISDN , 1

## K

K1297\–G20 Application, 38  
Keyboard, 16, A-5, B-1  
    Language support, B-6  
Keys  
    Alphanumeric, B-2  
    Cursor, B-5  
    Function, B-4  
    Numeric, B-5  
    Special, B-2

## L

LAN operation, 57  
Language support, B-6  
LEDs, 15, A-3, A-30, A-33  
Live Mode, 70  
Logon, 36  
LPT, A-8

## M

Manual, 5  
    Application, 5  
    Online, 5  
    User, 5  
Markings, 6  
Measurement  
    Descriptions, 5  
    Scenarios, 40  
    Unit, C-4  
Measuring Modules, 14, 15, 26  
    Exchanging, 26  
Modem operation, 57  
Modules, 1, 10, 33, 34  
    Connecting, 35  
    Installing, 30, 32, 33  
    Removing, 34  
Mouse, External, B-9, B-10

## N

Network operation, Security, 57

## O

Online  
    Help, 41  
    Manuals, 5  
    Monitoring, 64, 69

## P

Packet View, 71  
Password, 55  
PC  
    Card, 14  
    Card Slots, A-20  
    Module, 15  
PCM  
    Check, 66  
    Interfaces, 1, A-47  
    Routes, 1  
    Transmission rates, A-48  
Power Supply, C-1  
Prepare the Protocol Tester, 9  
Prerequisites, 4  
PRIMO (see Boards, E1/DS1), A-47  
Protocol, 59  
Protocol Assistant, 5  
Protocols, 1

## Q

Qualifications, 4

## R

- Record Viewer, 76
- Recording
  - Data, 72
  - File, 72
- Recovery disk, E-8
- Release notes, 5
- Remote operation, 60
- Reset, 15, A-3
- Restore
  - K15 user data, E-6
  - Windows XPe data, E-4
- Reviewing Recorded Data, 76

## S

- S0 Interface Module, A-29
- Safety, iii, iv, v, vii, 4, 6, 26
  - Symbols, v
  - Terms, v
- SCSI, Interface, A-17
- Security, 36, 57
- Serial Interface (COM1), A-7
- Setting-up the Device, 13
- Setting-up, 11
- Short View, 71
- Sockets, also see Interfaces, 15
- Software, Repair, E-7
- Software Installation, 42
- Special keys, B-2, B-3
- Specifications, C-1
- Starting a Calltrace, 81
- Switching on/off, 13, 23, 36
- System
  - Processor, A-2, A-3
  - Unit, A-2

- System restore, E-2

## T

- Text styles, Markings, 6
- Trackball, B-7
  - Cleaning of, B-7
  - Switching off/on, B-8, B-11
- Training Information, 7
- Transport, 1, 9, 23
- Troubleshooting, Recovery disk, E-8

## U

- U2B1Q Interface Module, A-32
- User Manual, 5, 6

## V

- V./X. Board, A-38
- Ventilation, iv
- VGA, A-12
- VME
  - Bus address, 32
  - Setting, 32
- VME Bus, 10, 30, A-56
  - Setting the Address, 30, A-56

## W

- Wildcards, 83
- Windows XPe, 5, 54
  - Configuration, 55
  - Repair, E-9
  - Security requirements, 57
  - Troubleshooting, E-1